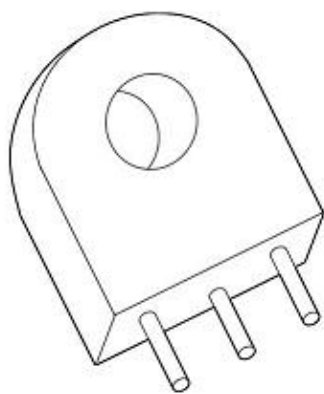


Current Sense Xfmr - PCB Type: 50 - 400Hz

Triad Current Sense Transformers are used to detect currents passing through a conductor. These transformers are very reliable and operate effectively between 50-400Hz . They are constructed of UL rated 130C° materials.

Please note: [highlighted](#) part numbers are hyperlinked, you can click part number for datasheet.



Part No.	Ip Amps	Turns Ratio	DCR (Ω) Nominal	Dimensions (mm)						Net Weight (g)
				H	W	D	ID	A	B	
CST-1005	5	1000:1	40	24.80	23.50	12.00	8.50	15.0	7.0	20.0
CST-1010	10	1000:1	40	24.80	23.50	12.00	8.50	15.0	7.0	20.0
CST-1015	15	1000:1	40	24.80	23.50	12.00	8.50	15.0	7.0	20.0
CST-1020	20	1000:1	40	24.80	23.50	12.00	8.50	15.0	7.0	20.0
CST-1025	25	1000:1	46	30.20	30.20	14.30	11.40	20.32	10.16	30.0
CST-1030	30	1000:1	46	30.20	30.20	14.30	11.40	20.32	10.16	30.0

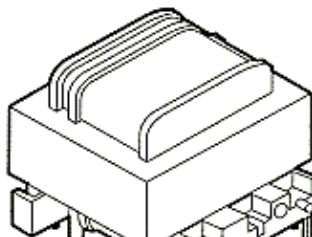
Notes:

1. Ip: Input Current
2. Pin 3 for mechanical support only
3. Pin length: 5 \pm 1mm
4. Pin diameter: 0.8 \pm .1mm

LOW FREQUENCY [CSE187L](#)

Description:

Designed to monitor current in low frequency applications. This Triad Magnetics part may be used to monitor current from .1 to 30 amperes at

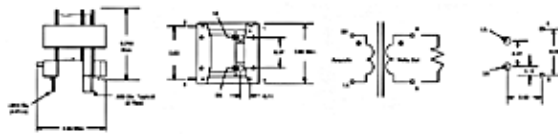


frequencies from 50 Hz to 400 Hz.

This product is also available potted as [CSE187L-P](#).

Technical Notes:

1. Turns ration: Primary to sense 1:500.
2. Suggested burden resistor: 60 ohms.
3. Typical output: 110 mV/Amp.
4. Primary DCR: $250\mu\Omega$ max.
5. Sense DCR: 21 ohms max.
6. Sonstructed with UL recognized materials)Class B, 130°C).
7. Hi-pot: 500 volts.



[Click and pull from corner to enlarge](#)

Triad Magnetics | 22520 B Temescal Canyon Road | Corona CA 92883 | T 951.277.0757 | F 951.277.2757