

2 Phase Hybrid Stepping Motor

43D SERIES
42mm (NEMA17)



1.8°

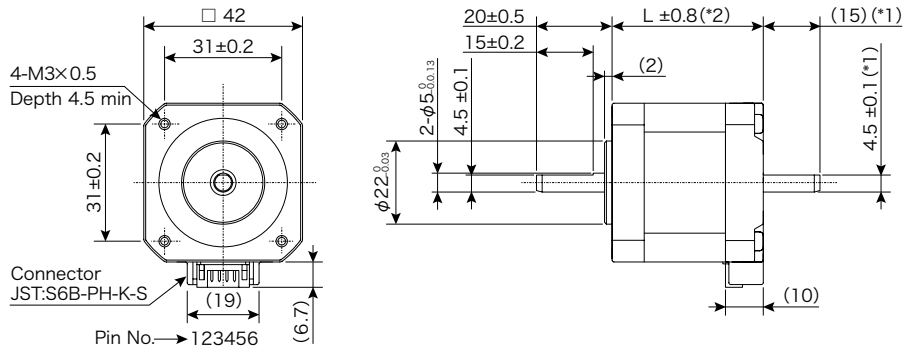
Bipolar

SPECIFICATIONS

MODEL	STEP ANGLE	VOLTAGE	CURRENT	RESISTANCE	INDUCTANCE	HOLDING TORQUE	ROTOR INERTIA	NUMBER OF PINS	MASS	LENGTH
	deg.	V	A/φ	Ω/φ	mH/φ	mN·m	g·cm ²	Pin	g	mm
SST43D104X	1.8	6.8	0.57	12.00	16.0	294	33	4	230	34
SST43D106X	1.8	4.9	0.85	5.75	8.1	304	33	4	230	34
SST43D108X	1.8	3.6	1.13	3.20	4.9	312	33	4	230	34
SST43D110X	1.8	3.0	1.41	2.10	3.3	319	33	4	230	34
SST43D112X	1.8	2.3	1.70	1.35	2.3	322	33	4	230	34
SST43D115X	1.8	1.9	2.12	0.90	1.5	309	33	4	230	34
SST43D204X	1.8	8.6	0.57	15.00	24.0	420	56	4	290	40
SST43D206X	1.8	5.1	0.85	6.00	11.8	432	56	4	290	40
SST43D208X	1.8	3.9	1.13	3.45	7.1	422	56	4	290	40
SST43D210X	1.8	3.4	1.41	2.40	4.8	441	56	4	290	40
SST43D212X	1.8	2.8	1.70	1.65	3.6	456	56	4	290	40
SST43D214X	1.8	2.3	1.98	1.15	2.5	441	56	4	290	40
SST43D216X	1.8	2.1	2.26	0.95	1.8	424	56	4	290	40

Final Number 5:Single Shaft 6:Double Shaft

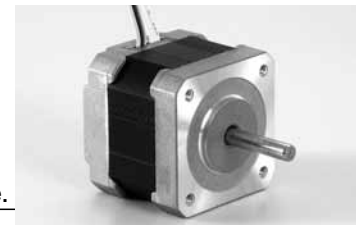
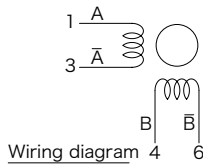
DIMENSIONS



Mating connector

Housing	JST:PHR-6
Contact	JST:SPH-002T-P0.5S

*1 Dimensions apply to double shaft models.
*2 Available motor length 31mm~61.5mm



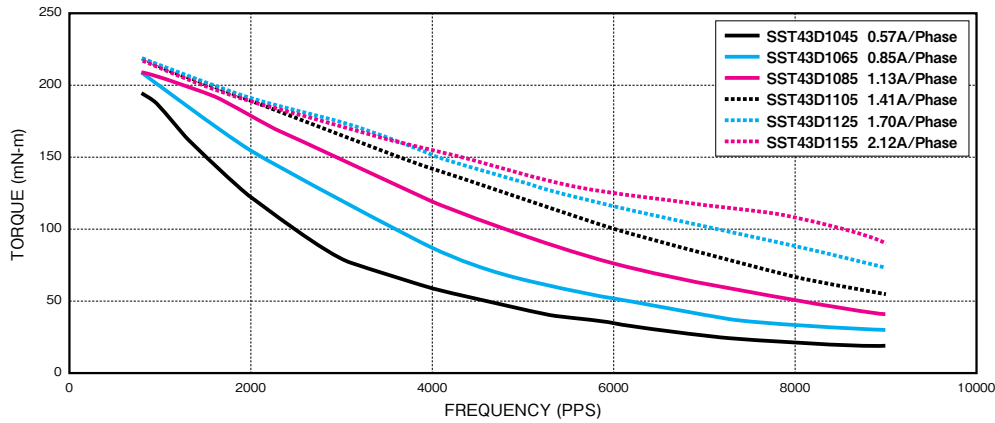
Lead wire type is available.

TORQUE RANGE

STEP ANGLE	SIZE		WINDINGS	MODEL	TORQUE (mN-m)*FREQUENCY at 1,000pps															
					0	50	100	200	300	400	600	800	1000	1500	2000					
1.8°	42mm	NEMA17	Bipolar	43D1	[Redacted]															
				43D2	[Redacted]															

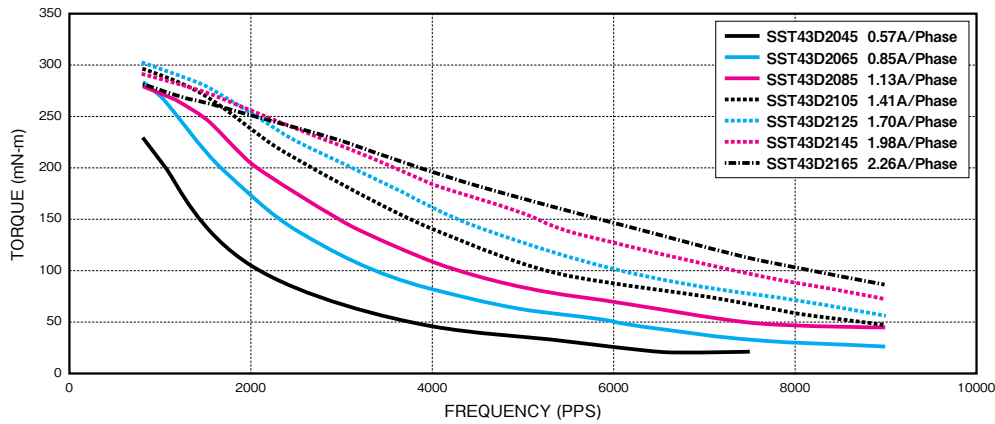
PULL OUT TORQUE CURVE

SST43D1XXX



DRIVER Chopper
 SUPPLY VOLTAGE DC24V
 EXCITING MODE = 2 Phase
 MOUNTING with rubber damper

SST43D2XXX



DRIVER Chopper
 SUPPLY VOLTAGE DC24V
 EXCITING MODE = 2 Phase
 MOUNTING with rubber damper

i Modified shaft, custom winding and other modifications are available. Please feel free to contact sales office or sales agent.

! Operate the motor keeping the motor surface temperature at 100 deg. C or lower.