



TEXCELL

FEATURES

The Texcell KMH series relay is a 3A-5A relay available in 2FC, 3FC or 4FC contact configurations. There are multiple coil options from 6VDC to 240VAC and multiple mounting options from PC-mount to plug-in to bracket mounting.



- Long life and high reliability
- Strong construction for vibration and shock
- Approximately thousands of kinds are available depending on the combination of terminals, covers, contact ratings, coils, etc.
- Plastic materials: UL 94V-0

SPECIFICATIONS

Contact Data

Item / Arrangement	KMH2, KMH3		KMH4	
	DPDT(2c), 3PDT(3c)		4PDT(4c)	
Rated Load	Resistive Load (cos ϕ = 1) 5A 250VAC 5A 30VDC	Inductive Load (cos ϕ = 0.4) 2A 250VAC 2A 30VDC	Resistive Load (cos ϕ = 1) 3A 250VAC 3A 30VDC	Inductive Load (cos ϕ = 0.4) 0.8A 250VAC 1.5A 30VDC
Carrying Current	5A		3A	
Max. Switching Voltage	250VAC, 30VDC			
Max. Switching Current	5A		3A	
Max. Switching Power	1,250VA, 150W	500VA, 60W	750VA, 90W	200VA, 45W
Min. Permissible Load	DC 5V 100mA		DC 5V 10mA	
Contact Material	Silver alloy		Gold plated silver alloy	

Characteristics (At Initial Value)

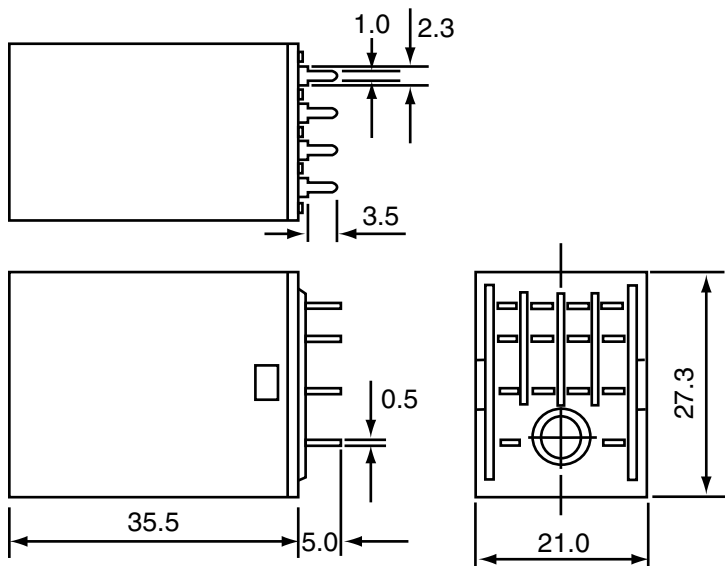
Contact Resistance	Max. 100mOhm (by voltage drop 6VDC 1A)
Operate Time (at Nominal Voltage)	Max. 20msec.
Release Time (at Nominal Voltage)	Max. 20msec.
Operating Frequency	20ops/minute
Insulation Resistance	Min. 100MOhm (at 500VDC)
Dielectric Strength	1,500VAC, for 1 minute between coil and contacts 750VAC, for 1 minute between contact sets 750VAC, for 1 minute between open contacts
Vibration Resistance	Functional: 6G, 10 to 55Hz at double amplitude of 1mm Destructive: 12G, 10 to 55Hz at double amplitude of 2mm
Shock Resistance	Functional: Min. 20G Destructive: Min. 100G
Ambient Temperature	-40 to +70°C
Humidity	45 to 85% RH
Life Expectancy	Mechanical: 1 x 10 ⁷ operations Electrical: 2 x 10 ⁵ operations (at rated load)
Weight	About 35g

DIMENSIONS

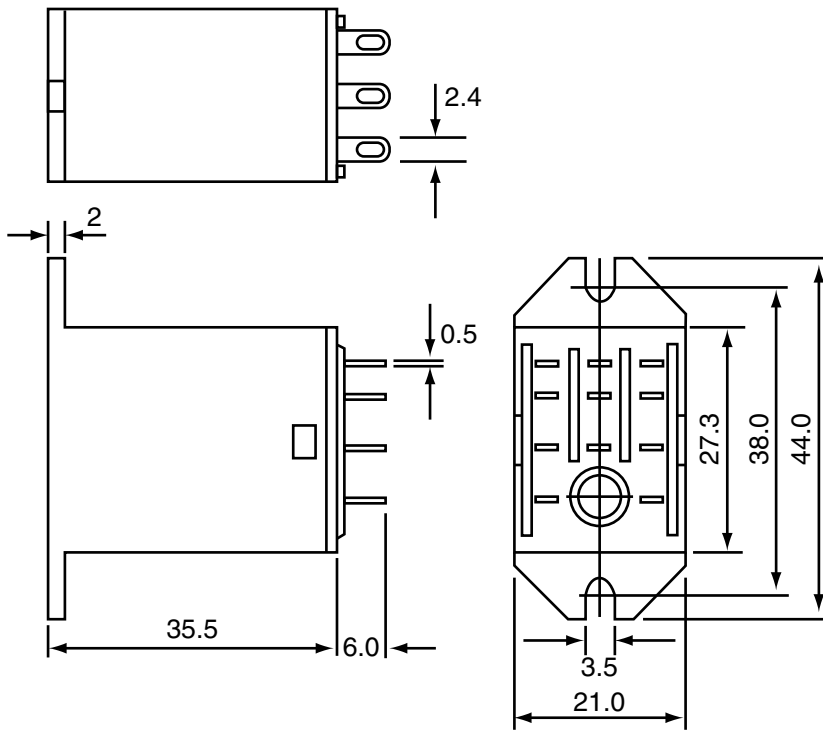
mm (inch)

Tolerance: ±0.3

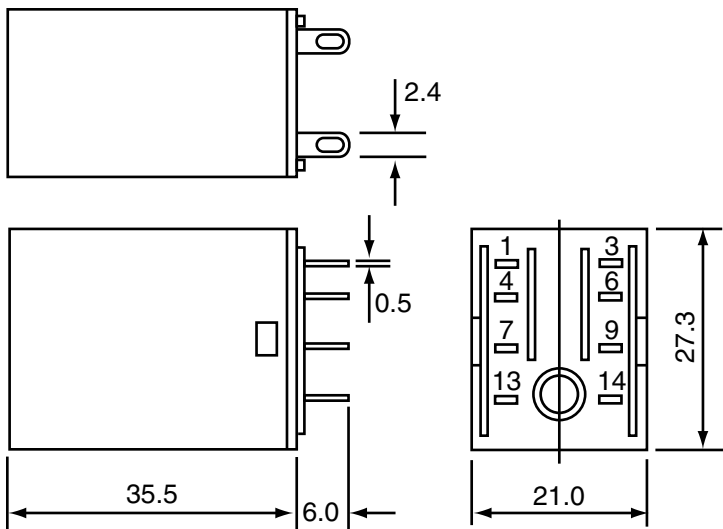
P.C.B. Terminal Type



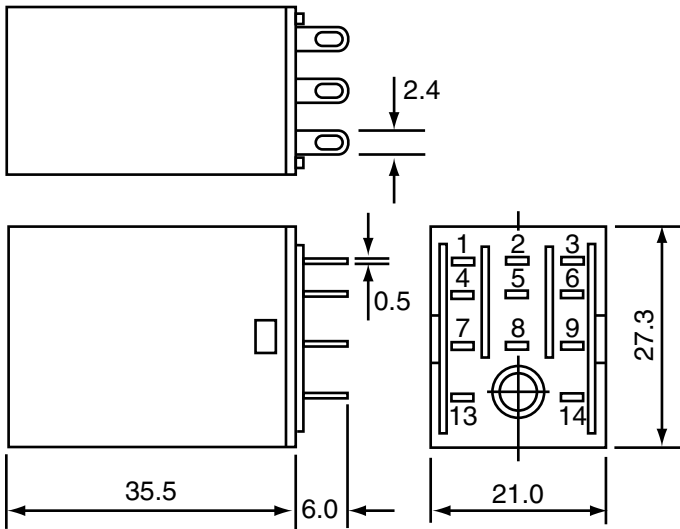
Bracketed Cover Type (1c, 2c, 3c, 4c)



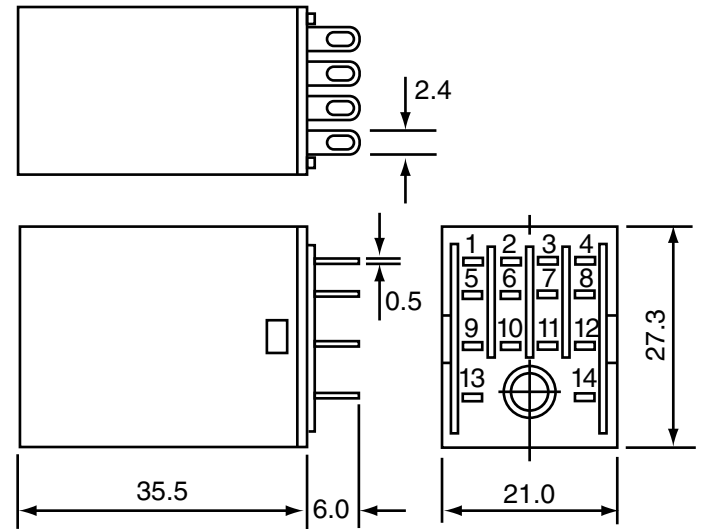
KMH2 (DPDT)



KMH3 (3PDT)

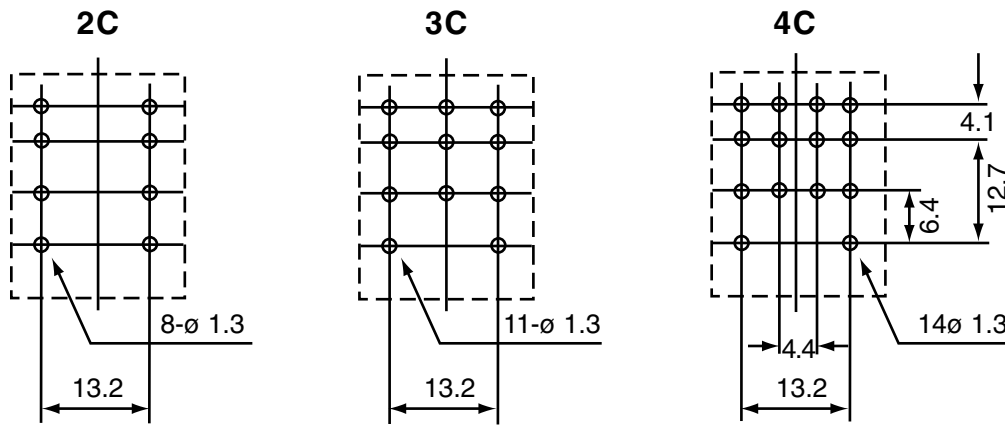


KMH4 (4PDT)



PAD LAYOUT

(bottom view) mm (inch)
Tolerance: ± 0.1



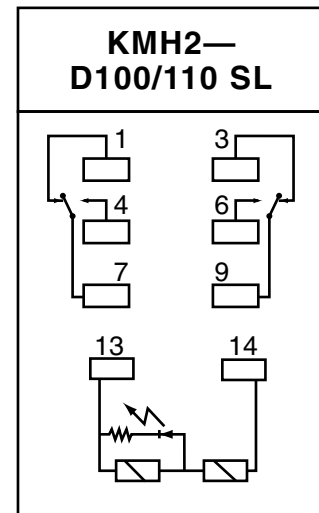
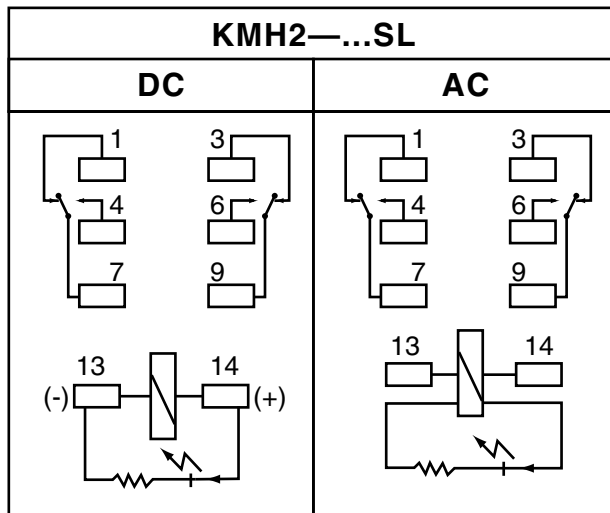
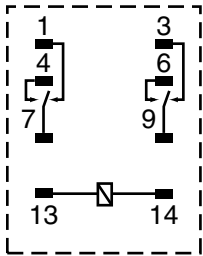
APPROVAL STANDARDS

Coil Rating	Contact Form	UL (File No. E122258)
6 to 110VDC 6 to 240VAC	DPDT(2c) 3PDT(3c) 4PDT(4c)	2c, 3c: 5A 250VAC, 5A 30VDC 4c: 3A 250VAC, 3A 30VDC

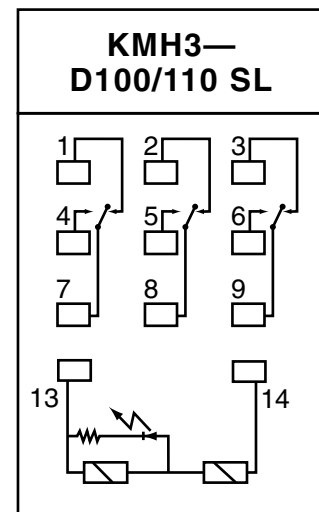
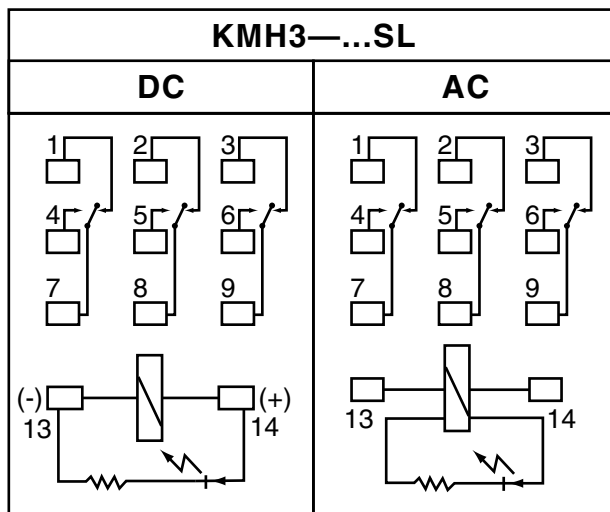
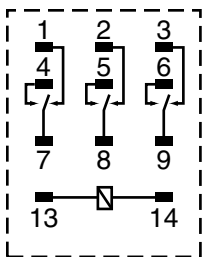
SCHEMATICS

(bottom view)

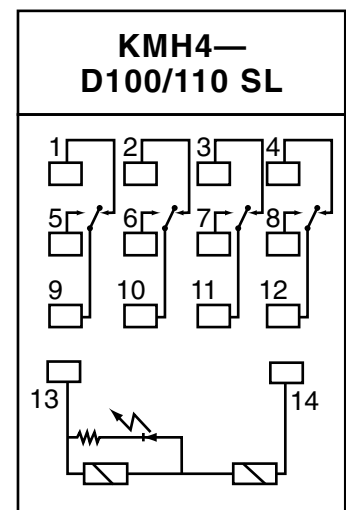
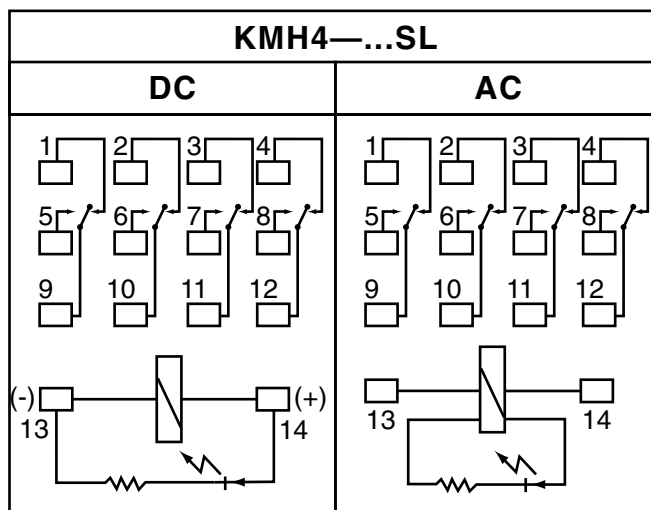
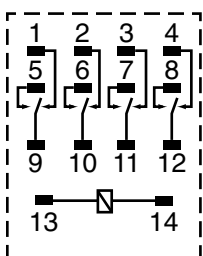
KMH2 (DPDT)



KMH3 (3PDT)



KMH4 (4PDT)



PART NUMBER SYSTEM

KMH 2 - D24 S
 ① ② ③

① Contact Arrangement

2: DPDT(2c)

3: 3PDT(3c)

4: 4PDT(4c)

② Coil Voltage

DC: 6, 12, 24, 48, 100/110VDC

AC: 6, 12, 24, 50, 100/110, 110/120, 200/220, 220/240VAC

③ Terminal Form

P: PC board

S: Plug-in

B: Top mounting

SL: Light emitting diode wired plug-in

PL: Light emitting diode wired pc board

NOMINAL LINEUP

Coil Data (at 20° C)

DC Type

Nominal Voltage VDC	Pick-up Voltage VDC (Max.)	Drop-out Voltage VDC (Min.)	Nominal Current mA ($\pm 10\%$)	Coil Resistance Ohm ($\pm 10\%$)	Power Consumption (W)	Max. Allowable Voltage (VDC)
6	4.8	0.6	150	40	0.9W	110% of nominal voltage
12	9.6	1.2	75	160		
24	19.2	2.4	36.9	650		
48	38.4	4.8	18.5	2,600		
100/110	80/88	10/11	9.1/10	11,000		

AC Type

Nominal Voltage VDC	Pick-up Voltage VAC (Max.)	Drop-out Voltage VAC (Min.)	Nominal Current mA (+15, -20%)	Coil Resistance Ohm (±10%)	Power Consumption (W)	Max. Allowable Voltage (VDC)
6	4.8	1.8	183	12.2	Approx. 1.0-1.2VA	110% of nominal voltage
12	9.6	3.6	91	46		
24	19.2	7.2	46	180		
50	40	15	22	788		
100/110	80/88	30/33	10/11	3,750	Approx. 0.9-1.1VA	
110/120	88/96	33/36	8.4/9.2	4,430		
200/220	160/176	60/66	5.3/5.8	12,950		
220/240	176/192	66/72	4.2/4.6	18,790		

World Products Inc.

19654 8th St. East, Sonoma, CA 95476 USA
 Phone: (707) 996-5201 Fax: (707) 996-3380
 E-mail: emdsales@worldproducts.com

© 2002 World Products Inc. All rights reserved.