

1. Electrical Specifications:

- 1-1 Input voltage: AC 90V-264V rms, 47-63 Hz
- 1-2 Input current: AC 850mA rms MAX @ AC 120V, 60 Hz
- 1-3 Output voltage and current

OUTPUT	TOLERANCE	RIPPLE AND NOISE	OUTPUT CURRENT
15.0V	14.25-15.75V	150mV p-p MAX	0-2.5A

Note: (1) Output voltage to be measured after 30 secs. minimum warm-up with 2.5A load.

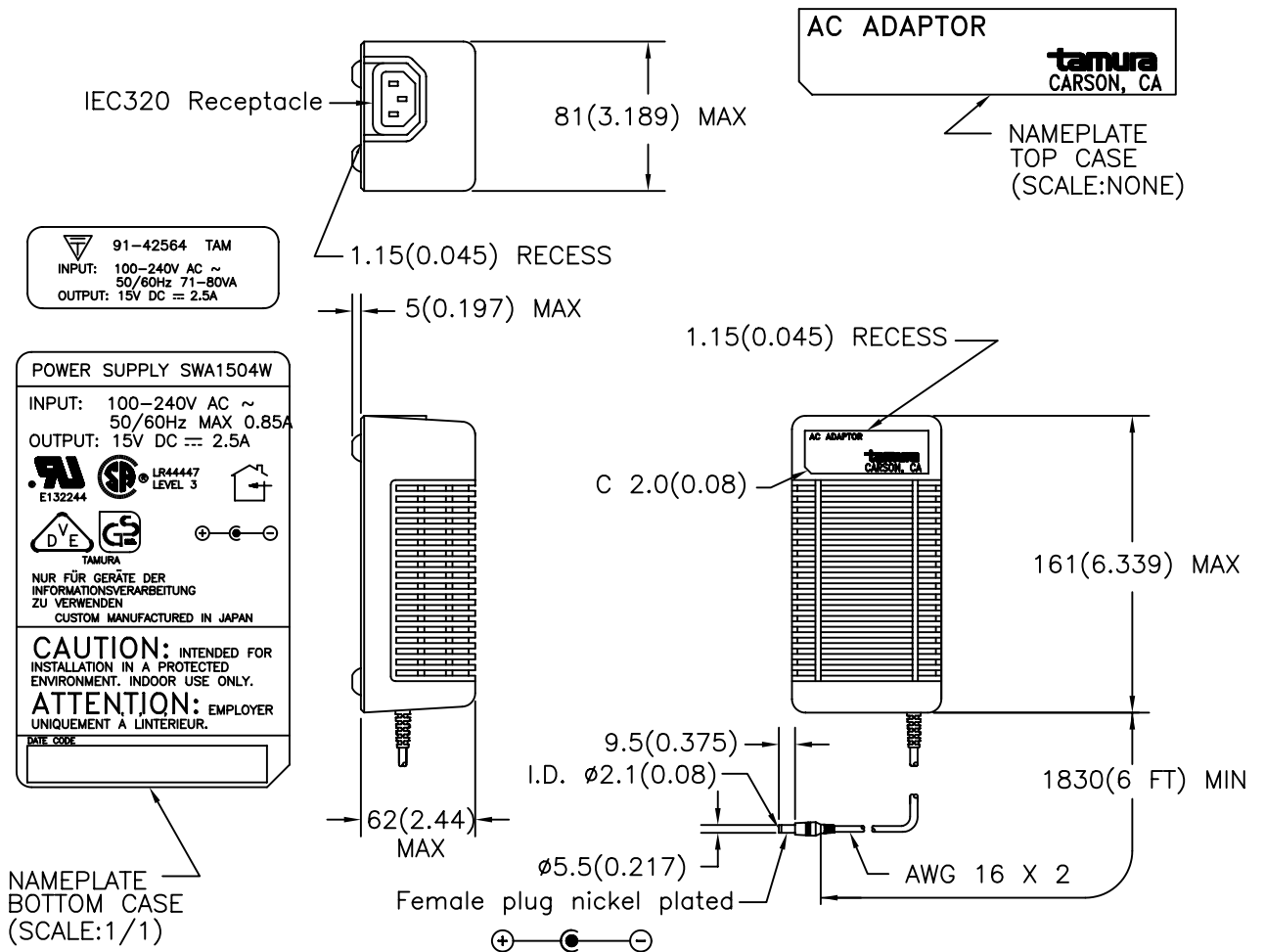
(2) This is specified at any combination of input voltage, frequency, load current, humidity, or temperature within their respective limits.

- 1-4 Input surge current 50A MAX under a cold start
- 1-5 Efficiency: 65% MIN.
- 1-6 Hold up time: 10 msec minimum at AC100V input, full load
- 1-7 Operating temperature and humidity: 0° C to +40° C, 10% to 90% humidity (non condensing)
- 1-8 Storage temperature and humidity: -10° C to +70° C, 5% to 95% humidity (non condensing)
- 1-9 Withstand voltage: AC 1500V rms 1 minute @ Input to Output
- 1-10 Insulation resistance: 50 M $\Omega$  minimum @ 500VDC Input to Output
- 1-11 EMI: FCC Part 15J Class B, VDE 0871 Class B, VCCI Class 2.

2. Safety: UL1950 FILE NO. E133370

CSA 22.2 NO. 1402C FILE NO. LR44447  
VDE EN60950  
MITI 91-42564

3. Mechanical Specifications:



PREPARED BY: K. Georgeson ENGINEER:	DWG CONTROL NO. P-A7-10574 (ACAD\PS\SWA\A7105741.DWG)	REV -	UL/CSA/VDE/MITI DC 15V 2.5A POWER SUPPLY	<b>SWA1504W</b> MODEL SPECIFICATION
APPROVED: B. Malherbie ENGINEER:	CONTENTS OF THIS DRAWING ARE SUBJECT TO CHANGE WITHOUT PRIOR NOTICE		<b>TAMURA CORPORATION OF AMERICA</b> 1150 DOMINGUEZ STREET CARSON, CA., 90746 (310) 638-1790 FAX 3106389956	
APPROVED: M. Foster	PROPRIETARY NOTICE: THIS DRAWING PRINT OR DOCUMENT AND SUBJECT MATTER DISCLOSED HEREIN ARE PROPRIETARY ITEMS TO WHICH TAMURA RETAINS THE EXCLUSIVE RIGHT OF DISSEMINATION, REPRODUCTION, MANUFACTURE AND SALE. THIS DRAWING, PRINT OR DOCUMENT IS SUBMITTED IN CONFIDENCE FOR CONSIDERATION BY THE RECIPIENT ALONE UNLESS PERMISSION FOR FURTHER DISCLOSURE IS EXPRESSLY GRANTED IN WRITING.			