

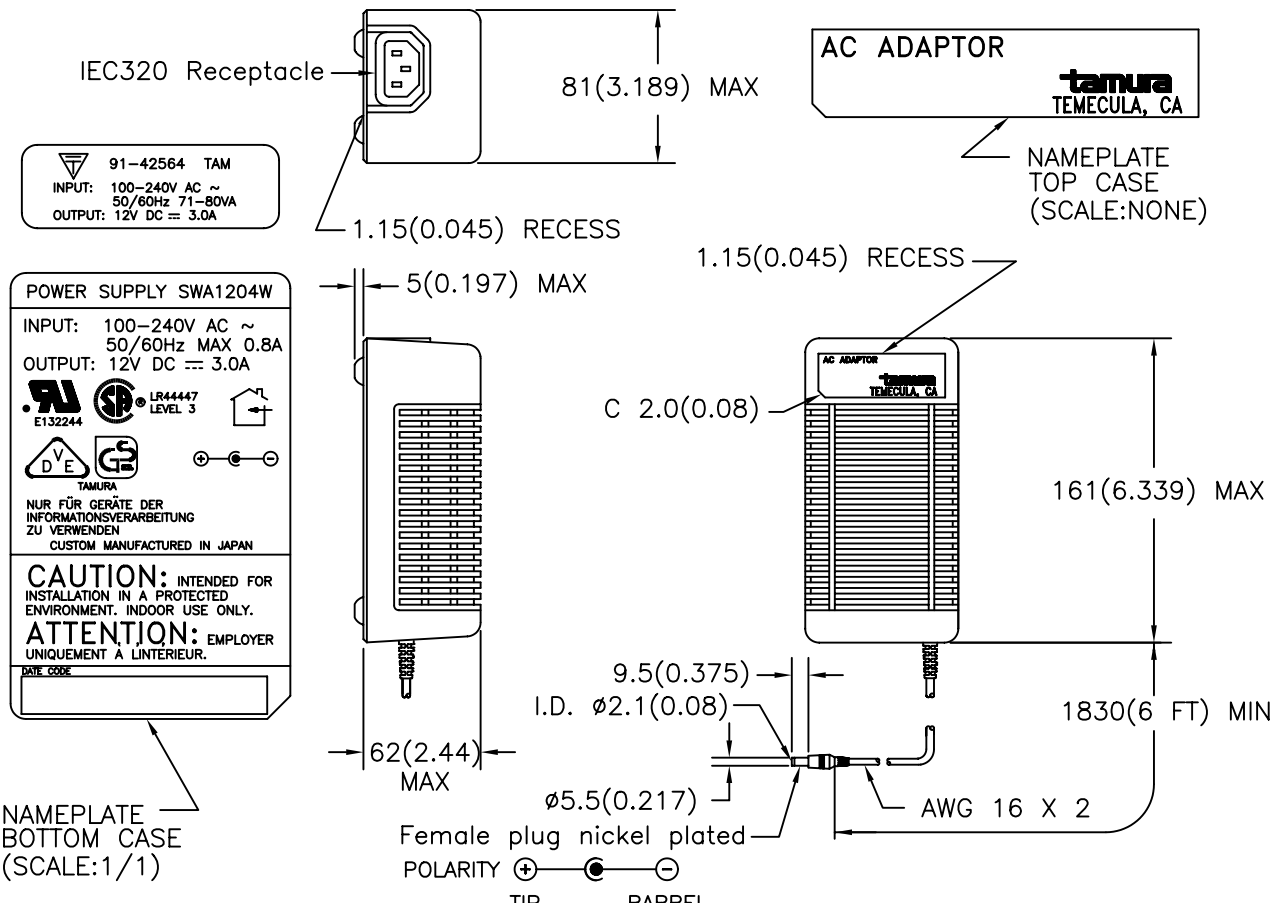
REV. Status

ISSUE 1  
3/5/92 YN

ISSUE 2  
TEMECULA  
WAS CARSON  
REFORMATTED  
04/12/95 DS

1. Electrical Specifications:
  - 1.1 Input voltage: AC 90V-264V rms, rating 100-240V 47-63 Hz
  - 1.2 Input current: AC 800mA rms MAX @ AC 120V, 60 Hz
  - 1.3 Output voltage and current
 

OUTPUT	TOLERANCE	RIPPLE AND NOISE	OUTPUT CURRENT
12.0V	11.40-12.60V	150mV p-p MAX	0-3.0A
- Note: (A) Output voltage to be measured after 30 secs. minimum warm-up with 3.0A load.  
 (B) This is specified at any combination of input voltage, frequency, load current, humidity, or temperature within their respective limits.
- 1.4 Input surge current 50A MAX under a cold start
- 1.5 Efficiency: 65% TYP.
- 1.6 Hold up time: 10 msec minimum at AC100V input, full load
- 1.7 Operating temperature and humidity: 0° C to +40° C, 10% to 90% humidity (non condensing)
- 1.8 Storage temperature and humidity: -10° C to +70° C, 5% to 95% humidity (non condensing)
- 1.9 Withstand voltage: AC 1500V rms 1 minute @ Input to Output
- 1.10 Insulation resistance: 50 M? minimum @ 500VDC Input to Output
- 1.11 EMI: FCC Part 15J Class B, VDE 0871 Class B, VCCI Class 2.
2. Safety: UL1950 FILE NO. E133370  
 CSA 22.2 NO. 1402C FILE NO. LR44447  
 VDE EN60950  
 MITI 91-42564
3. Nameplate: Information is as follows:  
 Metallic letters on black background
4. Mechanical Specifications:  
 All dimensions shown are nominal unless otherwise specified



PREPARED BY:

K. Brennan

ENGINEER:

D. Suzuki

QUALITY CONTROL:

D. Kelley

APPROVED:

M. Ong

REFERENCE: MATING CONNECTOR 722A SWITCHCRAFT, HEC0470-01-230 HOSHIDEN

DWG CONTROL NO. P-A7-10573 ACAD\SWA\A7105731.DWG	REV A	UL/CSA/VDE/MITI/ DC 12V 3A POWER SUPPLY	<h2 style="margin: 0;">SWA1204W</h2> MODEL SPECIFICATION		
CONTENTS OF THIS DRAWING ARE SUBJECT TO CHANGE WITHOUT PRIOR NOTICE			43352 BUSINESS PARK DRIVE, TEMECULA, CA. 92590-6624 (909) 699-1270 FAX 9096769482		
PROPRIETARY NOTICE: THIS DRAWING PRINT OR DOCUMENT AND SUBJECT MATTER DISCLOSED HEREIN ARE PROPRIETARY ITEMS TO WHICH TAMURA RETAINS THE EXCLUSIVE RIGHT OF DISSEMINATION, REPRODUCTION, MANUFACTURE AND SALE. THIS DRAWING, PRINT OR DOCUMENT IS SUBMITTED IN CONFIDENCE FOR CONSIDERATION BY THE RECIPIENT ALONE UNLESS PERMISSION FOR FURTHER DISCLOSURE IS EXPRESSLY GRANTED IN WRITING.			DIM: mm(In)	SCL: 1/4	SH: 1 OF 1