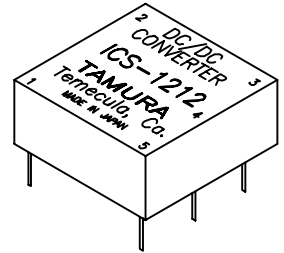


DC/DC CONVERTER 0.3W +12Vout

A. Electrical Specifications

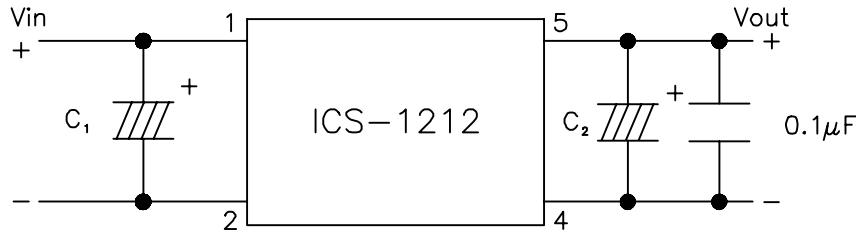
- | | |
|----------------------------|--|
| 1. Input Voltage | 9.6-14.4Vdc (Rating 12V) |
| 2. Output Voltage | 12V±0.12 |
| 3. Output Current | 7.5-25.0mA |
| 4. Output Ripple | 50mVp-p typ. at 22µF for output cap.
Recommend low ESR. |
| 5. Line Regulation | ±1.2% MAX. |
| 6. Load Regulation | 10% MAX. |
| 7. Temperature coefficient | ±0.03%/°C |
| 8. Efficiency | 50% MIN. |
| 9. Output short protection | Built-in auto-reset protection |
| 10. Operating temperature | -10°C-+70°C |
| 11. Storage temperature | -30°C-+85°C |
| 12. Operating humidity | 95% RH max. without condensation |
| 13. Dielectric strength | DC500V 1 min. Input-Output, Case |
| 14. Insulation resistance | 50MΩ min. at DC500V |

MODEL NUMBER
ICS-1212



B. Marking; ICS-1212, TAMURA, Temecula Ca, date code and country of origin

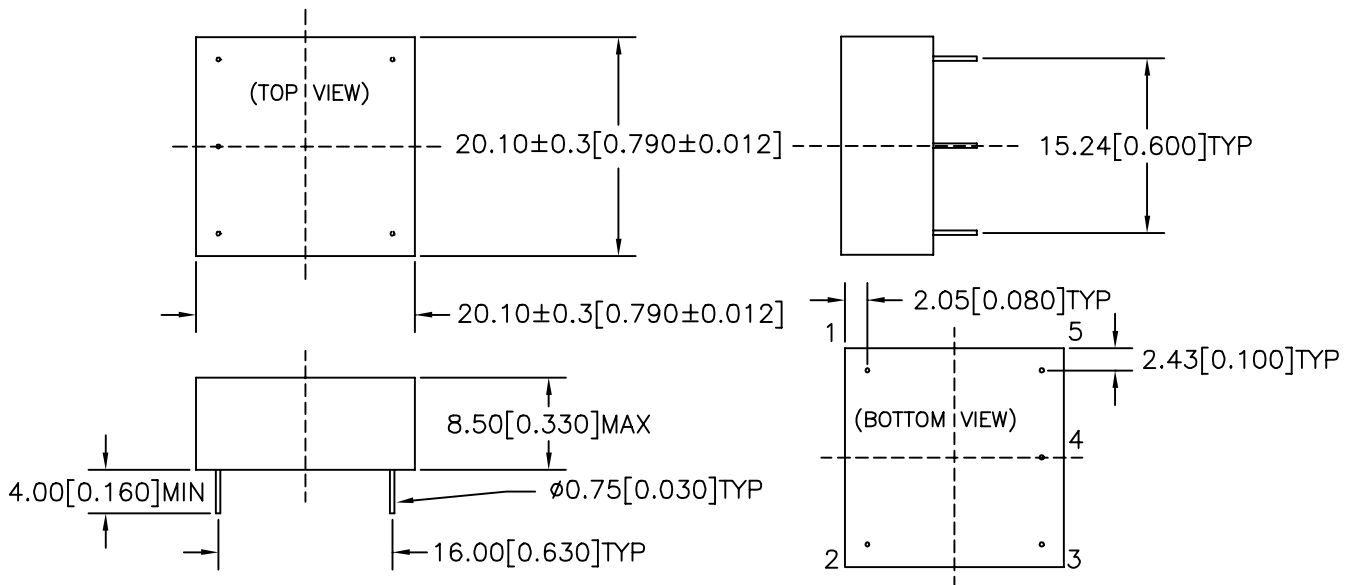
C. Schematic



External Capacitor
C1 47µF / 16V
C2 47µF / 16V
Recommended

D. Mechanical specification

- | | |
|---------------------------|--|
| 1. Outline dimensions | 20.4(0.80) x 20.4(0.80) x 8.5(0.33) max. |
| 2. Soldering pin diameter | ø0.75mm |
| 3. Vibration | 15G or max stroke 1.52mm whichever is smaller
10-2000Hz |
| 4. Shock | 50G half-sine wave |



PREPARED BY:

D. Rund

ENGINEER:

DWG CONTROL NO. P-A3-12530
ACAD\MISCX\A3125301.DWG

REV

-

DC/DC CONVERTER
0.3W 12Vin +12Vout

ICS-1212

QUALITY CONTROL:

D. Kelley

CONTENTS OF THIS DRAWING ARE SUBJECT TO CHANGE WITHOUT PRIOR NOTICE

TAMURA CORPORATION OF AMERICA
43352 BUSINESS PARK DRIVE, TEMECULA, CA. 92590-6624
(909) 699-1270 FAX 9096769482

MODEL SPECIFICATION

DIM: mm(In)	SCL: 2/1	SH: 1 OF 1
-------------	----------	------------

APPROVED:

D. Kelley

PROPRIETARY NOTICE: THIS DRAWING PRINT OR DOCUMENT AND SUBJECT MATTER DISCLOSED HEREIN ARE PROPRIETARY ITEMS TO WHICH TAMURA RETAINS THE EXCLUSIVE RIGHT OF DISSEMINATION, REPRODUCTION, MANUFACTURE AND SALE. THIS DRAWING, PRINT OR DOCUMENT IS SUBMITTED IN CONFIDENCE FOR CONSIDERATION BY THE RECIPIENT ALONE UNLESS PERMISSION FOR FURTHER DISCLOSURE IS EXPRESSLY GRANTED IN WRITING.