

1. Electrical specifications

1.1 Input voltage: AC 120V ±10% 60 Hz ±0.5 Hz

1.2 Output voltage and current: Specified DC voltage on below at 300mA load current

Output Voltage at 100% Load (DCV)					
Vin	3V	4.5V	6V	7.5V	9V
108	2.47 MIN	3.32 MIN	4.37 MIN	5.41 MIN	6.46 MIN
120	2.94-3.26	4.03-4.52	5.13-5.67	6.36-7.04	7.50-8.30
132	--	--	--	--	--

Output Voltage at 10% Load (DCV)					
Vin	3V	4.5V	6V	7.5V	9V
108	--	--	--	--	--
120	4.62 MAX	5.99 MAX	7.56 MAX	9.03 MAX	10.77 MAX
132	5.15 MAX	6.72 MAX	8.51 MAX	10.08 MAX	11.97 MAX

- NOTES: 1) Specification applies after 10 minutes warm-up with 300mA load and at any operating temperature.
2) This adaptor has five selectable output voltages of 3.0, 4.5, 6.0, 7.5, and 9.0VDC with universal polarity reversing output plugs.

1.3 Operating temperature: 0 ° C to +40 ° C

1.4 Storage temperature: -20 ° C to +85 ° C

1.5 Operating and Storage Humidity: 0 to 95% without condensation

1.6 Withstand voltage: AC 1500Vrms 1 minute @ input to output

2. Typical performance data test Condition: Ta= +25 ° C measured after 10 minute warm-up with input at 120V 60Hz

3. Safety agencies

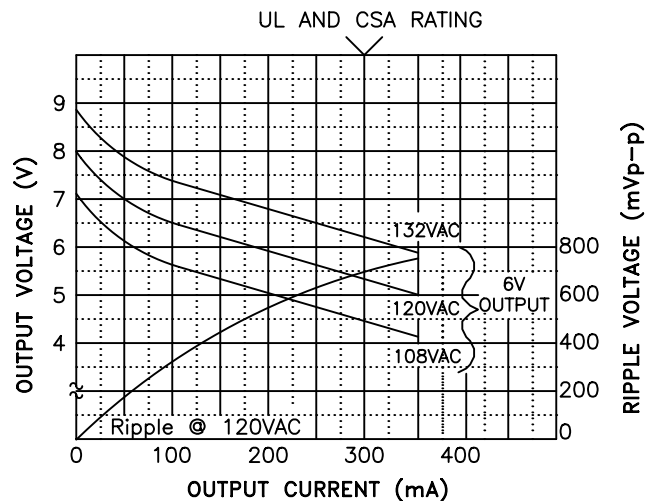
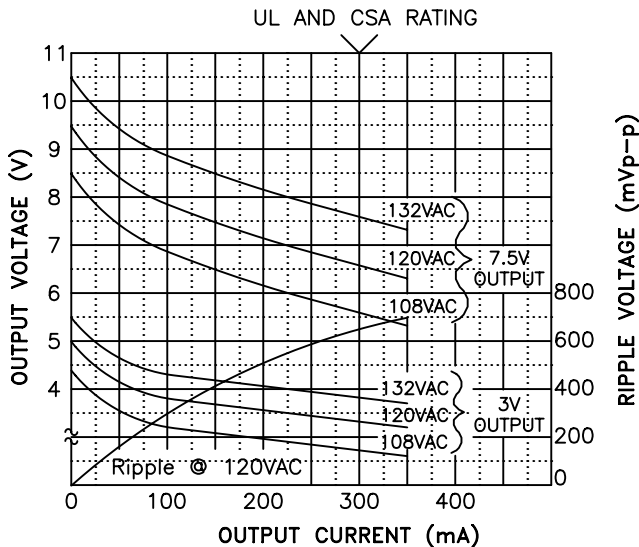
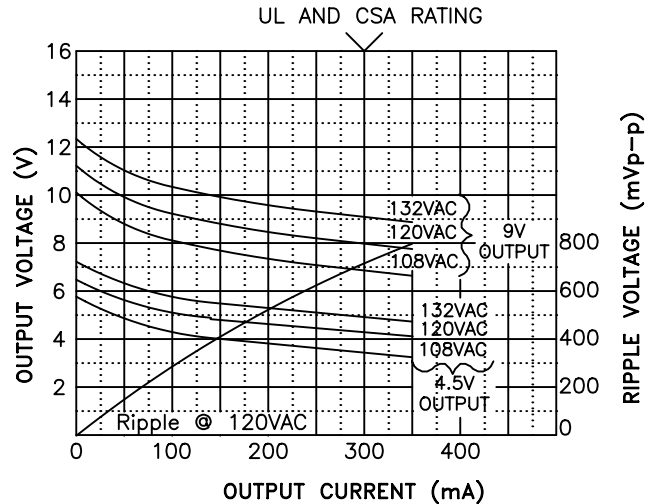
UL File No. E82180

Transformer UL recognition No. 4258

UL approved as a battery charger

CSA File No. LR38236

4. Nameplate: See drawing P-N1-11283 for detail



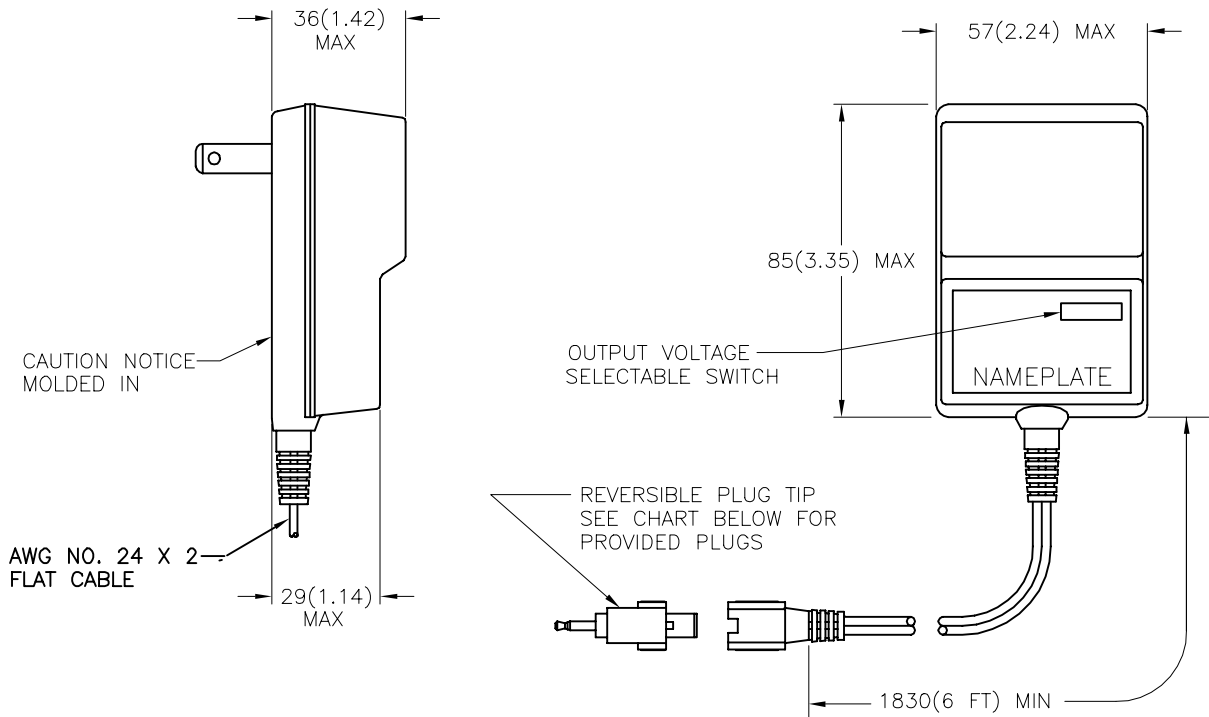
PREPARED BY: K. Brennan	DWG CONTROL NO. P-A7-11282 ACAD\PS\A7112821.DWG	REV -	UL/CSA DC 3V/4.5V/6V/7.5V/9V 300mA POWER SUPPLY	811A4214		
ENGINEER: D. Suzuki	<p style="text-align: center;">TAMURA CORPORATION OF AMERICA</p> 43352 BUSINESS PARK DRIVE, TEMECULA, CA. 92590-6624 (909) 699-1270 FAX 9096769482			MODEL SPECIFICATION		
APPROVED: D. Suzuki				PROPRIETARY NOTICE: THIS DRAWING PRINT OR DOCUMENT AND SUBJECT MATTER DISCLOSED HEREIN ARE PROPRIETARY ITEMS TO WHICH TAMURA RETAINS THE EXCLUSIVE RIGHT OF DISSEMINATION, REPRODUCTION, MANUFACTURE AND SALE. THIS DRAWING, PRINT OR DOCUMENT IS SUBMITTED IN CONFIDENCE FOR CONSIDERATION BY THE RECIPIENT ALONE UNLESS PERMISSION FOR FURTHER DISCLOSURE IS EXPRESSLY GRANTED IN WRITING.		

REV. Status

ISSUE 1
4/13/95 DS

5. Mechanical Specifications

All dimensions shown are nominal unless otherwise specified



NO.	PLUG	SCHEMATIC	D1 OR O.D.	D2 OR I.D.	L
1	MALE PLUG		2.5(0.098)	2.3(0.091)	11.0(0.433)
2	MALE PLUG		3.5(0.138)	3.0(0.118)	14.0(0.551)
3	FEMALE PLUG		3.4(0.134)	1.35(0.053)	11.0(0.433)
4	FEMALE PLUG		5.0(0.197)	1.35(0.053)	12.0(0.472)
5	FEMALE PLUG		5.0(0.197)	2.6(0.102)	12.0(0.472)
6	FEMALE PLUG		5.5(0.217)	2.0(0.083)	12.0(0.472)

PREPARED BY: K. Brennan	DWG CONTROL NO. P-A7-11282 ACAD\PS\A7112821.DWG	REV -	UL/CSA DC 3V/4.5V/6V/7.5V/9V 300mA POWER SUPPLY	<h1 style="margin: 0;">811A4214</h1> <p style="margin: 0;">MODEL SPECIFICATION</p>
ENGINEER: D. Suzuki	CONTENTS OF THIS DRAWING ARE SUBJECT TO CHANGE WITHOUT PRIOR NOTICE		<p style="margin: 0;">TAMURA CORPORATION OF AMERICA</p> <p style="margin: 0;">43352 BUSINESS PARK DRIVE, TEMECULA, CA. 92590-6624 (909) 699-1270 FAX 9096769482</p>	
APPROVED: V. Casey	<p style="margin: 0;">PROPRIETARY NOTICE: THIS DRAWING PRINT OR DOCUMENT AND SUBJECT MATTER DISCLOSED HEREIN ARE PROPRIETARY ITEMS TO WHICH TAMURA RETAINS THE EXCLUSIVE RIGHT OF DISSEMINATION, REPRODUCTION, MANUFACTURE AND SALE. THIS DRAWING, PRINT OR DOCUMENT IS SUBMITTED IN CONFIDENCE FOR CONSIDERATION BY THE RECIPIENT ALONE UNLESS PERMISSION FOR FURTHER DISCLOSURE IS EXPRESSLY GRANTED IN WRITING.</p>			<p style="margin: 0;">DIM: mm(in) SCL: NONE SH: 2 OF 2</p>