

NJR Microwave Doppler Sensor Modules

NJR
NEWS

2002 **16**

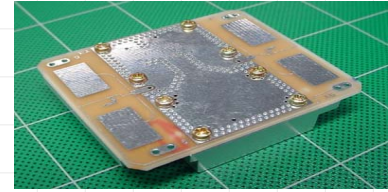
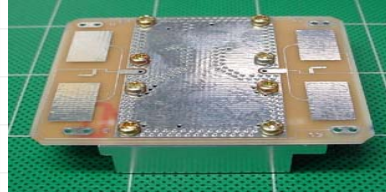
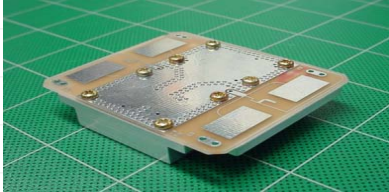
December 31, 2002

NJR Doppler Modules

NJR Doppler Modules

Types of Doppler Modules:

X-band (10GHz) Doppler [MIC type: Patch antenna Interface]



K-band (24GHz) Doppler [Discrete type: Waveguide Interface]



Applications

- **Safety**
 - Human detection for bath and lavatory bowl
 - Corner and Back sensor / Stop and Go for automotive
- **Energy Conservation**
 - Temperature control for air conditioner
 - Power saving for outdoor light Cooling System, Fan Heater
- **Security**
 - Intrusion Detection
 - Defense for breaking into car
- **Other Applications**
 - Automatic Door / Automatic operation for escalator
 - Factory Automation (FA)
 - Human detection for self-cleaning urinal

NOW Available !

Features

- Realization of concealing the aperture portion on sensor unit
- Not affected by ambient temperature
- Possibility of range finding [measure of the distance] (except for Doppler method)
- Easy setting of wide detection range
- Agency certifications

JRC Doppler Modules Offering

Model No	RF Freq. (GHz)	Model No	RF Freq. (GHz)
NJR 4147	10.525	NJR 4176	9.900
NJR 4151	9.900	NJR 4177	10.687
NJR4174	10.525	NJR4178	10.525
NJR 4175	10.525	NJR4211	24.110



NJR CORPORATION

A SUBSIDIARY OF NEW JAPAN RADIO COMPANY, LTD.

198 Stauffer Blvd. San Jose, CA 95125

NJR CORPORATION offers Bipolar ICs, CMOS ICs, BiCMOS ICs and GaAs MMICs as well as Saw filters, covering North and South America to provide technical assistance and quick delivery for achieving customer satisfactions. For further information, please contact:

PHONE : (408) - 995-6200 or WWW.NJR.COM

The World's Best Source for High Quality ICs using Bipolar, CMOS, BiCMOS and GaAs Technologies and Saw filters