

# MDS

- Metallized polyester (PET) DIL
- Low ESR and ESL
- Three and four pole connection possible
- Good temperature stability
- No voltage dependence of capacitance and dissipation factor

## TYPICAL APPLICATIONS

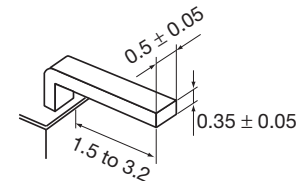
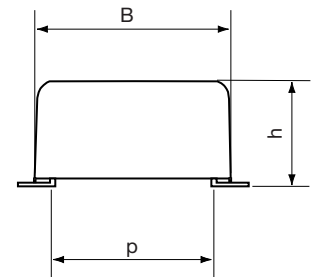
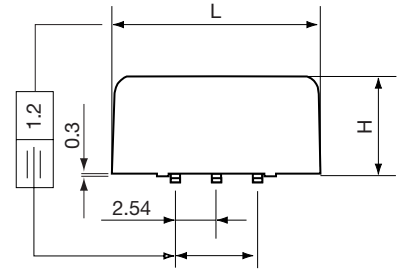
High frequency switched mode power supplies and DC-DC converters. Input/output filtering.

## CONSTRUCTION

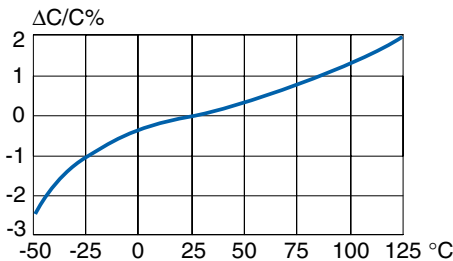
DIL metallized polyester (PET) film capacitor. Encapsulation in self-extinguishing material meeting the requirements of UL 94V-0.

## TECHNICAL DATA

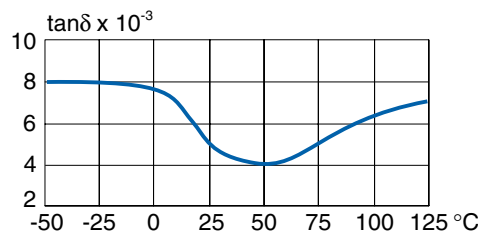
Rated voltage $U_R$ VDC	50	100	250	400	630
Rated voltage $U_R$ VAC	30	63	160	200	220
Capacitance range, $\mu\text{F}$	0.033 - 6.8	0.033 - 5.6	0.033 - 0.68	0.033 - 0.33	0.033 - 0.10
Capacitance tolerance	$\pm 10\%$ , $\pm 5\%$ , other tolerances on request				
Category temperature range	-55 to +125°C				
Rated temperature	+85 °C				
Voltage derating	The rated voltage is decreased with 1.25%/°C from +85 °C				
Climatic category	55/125/56				
Test voltage	1.6 x $U_R$ , 60s				
Insulation resistance	Minimum value between terminals				
	Measured at +20 °C according to IEC 60384-2				
		$C \leq 0.33 \mu\text{F}$		$C > 0.33 \mu\text{F}$	
	$U_R \leq 100 \text{ V}$	15 000 M $\Omega$		5 000 s	
	$U_R > 100 \text{ V}$	30 000 M $\Omega$		10 000 s	
Dissipation factor	Maximum values at +23°C				
		$C \leq 0.1 \mu\text{F}$	$0.1 < C \leq 3.3 \mu\text{F}$	$C > 3.3 \mu\text{F}$	
	1 kHz	0.8 %	0.8 %	0.8 %	
	10 kHz	1.5 %	1.5 %	1.5 %	
	100 kHz	2.5 %	5.0 %	-	
Self inductancy	Approximately 4 nH				



Detail of a lead



Capacitance vs temperature at 1 kHz

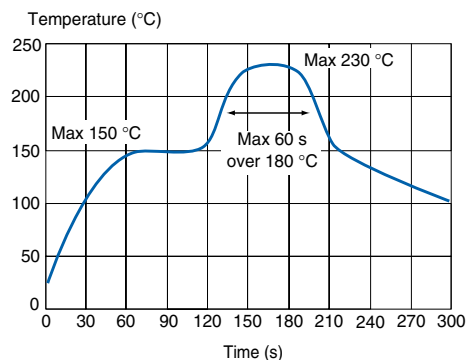


Dissipation factor vs temperature at 1 kHz

### RECOMMENDED SOLDERING CONDITIONS

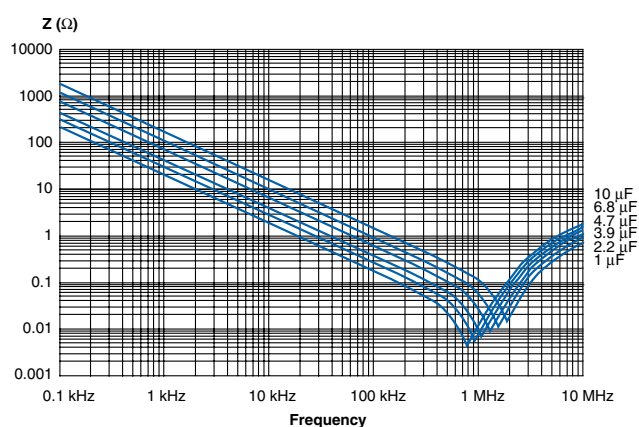
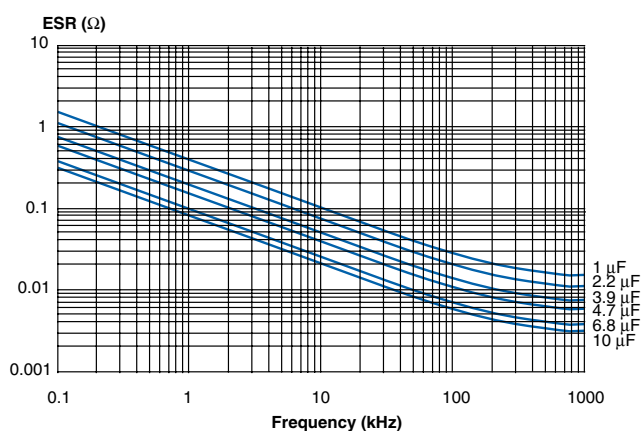
#### Electrode temperature, Reflow soldering

Preheating temperature should be less than 150 °C. The time above 180 °C should be less than 1 minute. The peak temperature must not exceed 230 °C.



Recommended reflow soldering profile

### TYPICAL DATA



#### ESR vs. frequency

##### Maximum RMS voltage $U_{RMS}$ (V) vs. frequency

Value	Rated voltage	1 kHz	10 kHz	100 kHz	500 kHz	1 MHz
1.0 μF	250 V	150.0	36.0	9.2	2.9	1.3
2.2 μF	100 V	50.0	25.0	5.0	1.2	0.6
3.9 μF	100 V	50.0	18.0	4.0	1.0	0.3
4.7 μF	100 V	50.0	16.0	3.5	0.7	0.2
6.8 μF	100 V	50.0	15.5	2.2	0.5	0.2
10 μF	100 V	50.0	15.0	2.0	0.4	0.2

#### Impedance vs. frequency

##### Maximum RMS current $I_{RMS}$ (A) vs. frequency

Value	Rated voltage	Case size	1 kHz	10 kHz	100 kHz	500 kHz	1 MHz
1.0 μF	250 V	A57	1.0	2.2	5.5	9.0	10.0
2.2 μF	100 V	A53	1.5	2.3	6.0	7.5	10.0
3.9 μF	100 V	A53	2.0	4.0	10.0	11.0	11.5
4.7 μF	100 V	A53	2.0	4.5	10.0	12.5	12.5
6.8 μF	100 V	A57	3.0	6.0	11.0	13.0	13.5
10 μF	100 V	A58	4.0	9.0	13.0	14.0	14.5

## ARTICLE TABLE

Capacitance $\mu\text{F}$	Dimensions in mm					Leads per side (Px and Py)	Quantity per package		ESR 500kHz m $\Omega$	Article code
	B $\pm 0.2$	H $\pm 0.2$	L $\pm 0.2$	p $\pm 0.2$	h max		Reel	Tube		
<b>50 VDC/30 VAC</b>										
<b>LEAD SPACING 10 MM</b>										
0.033	12.2	6.05	11.0	10.0	6.6	3		43	390	MDS10 333K50A52P3 TUBE
0.039	12.2	6.05	11.0	10.0	6.6	3		43	330	MDS10 393K50A52P3 TUBE
0.047	12.2	6.05	11.0	10.0	6.6	3		43	270	MDS10 473K50A52P3 TUBE
0.056	12.2	6.05	11.0	10.0	6.6	3		43	230	MDS10 563K50A52P3 TUBE
0.068	12.2	6.05	11.0	10.0	6.6	3		43	190	MDS10 683K50A52P3 TUBE
0.082	12.2	6.05	11.0	10.0	6.6	3		43	160	MDS10 823K50A52P3 TUBE
0.10	12.2	6.05	11.0	10.0	6.6	3		43	130	MDS10 104K50A52P3 TUBE
0.12	12.2	6.05	11.0	10.0	6.6	3		43	110	MDS10 124K50A52P3 TUBE
0.15	12.2	6.05	11.0	10.0	6.6	3		43	85	MDS10 154K50A52P3 TUBE
0.18	12.2	6.05	11.0	10.0	6.6	3		43	70	MDS10 184K50A52P3 TUBE
0.22	12.2	6.05	11.0	10.0	6.6	3		43	58	MDS10 224K50A52P3 TUBE
0.27	12.2	6.05	11.0	10.0	6.6	3		43	47	MDS10 274K50A52P3 TUBE
0.33	12.2	6.05	11.0	10.0	6.6	3		43	39	MDS10 334K50A52P3 TUBE
0.39	12.2	6.05	11.0	10.0	6.6	3		43	33	MDS10 394K50A52P3 TUBE
0.47	12.2	6.05	11.0	10.0	6.6	3		43	30	MDS10 474K50A52P3 TUBE
0.56	12.2	6.05	11.0	10.0	6.6	3		43	26	MDS10 564K50A52P3 TUBE
0.68	12.2	6.05	11.0	10.0	6.6	3		43	21	MDS10 684K50A52P3 TUBE
0.82	12.2	6.05	11.0	10.0	6.6	3		43	18	MDS10 824K50A52P3 TUBE
1.0	12.2	6.05	11.0	10.0	6.6	3		43	15	MDS10 105K50A52P3 TUBE
1.2	12.2	6.05	11.0	10.0	6.6	3		43	14	MDS10 125K50A52P3 TUBE
1.5	12.2	6.05	11.0	10.0	6.6	3		43	13	MDS10 155K50A52P3 TUBE
1.8	12.2	6.05	11.0	10.0	6.6	3		43	12	MDS10 185K50A52P3 TUBE
2.2	12.2	6.05	11.0	10.0	6.6	3		43	11	MDS10 225K50A52P3 TUBE
2.7	12.2	6.05	11.0	10.0	6.6	3		43	10	MDS10 275K50A52P3 TUBE
3.3	12.2	6.05	11.0	10.0	6.6	3		43	8	MDS10 335K50A52P3 TUBE
3.9	12.2	6.05	11.0	10.0	6.6	3		43	7	MDS10 395K50A52P3 TUBE
4.7	12.2	6.05	11.0	10.0	6.6	3		43	6	MDS10 475K50A52P3 TUBE
5.6	12.2	6.05	13.5	10.0	6.6	3, 4		35	5	MDS10 565K50A54PX TUBE
6.8	12.2	6.05	16.5	10.0	6.6	3, 4, 5		28	5	MDS10 685K50A55PZ TUBE
<b>LEAD SPACING 15 MM</b>										
0.033	16.5	6.05	11.0	15.0	6.6	3		43	390	MDS15 333K50B53P3 TUBE
0.039	16.5	6.05	11.0	15.0	6.6	3		43	330	MDS15 393K50B53P3 TUBE
0.047	16.5	6.05	11.0	15.0	6.6	3		43	270	MDS15 473K50B53P3 TUBE
0.056	16.5	6.05	11.0	15.0	6.6	3		43	230	MDS15 563K50B53P3 TUBE
0.068	16.5	6.05	11.0	15.0	6.6	3		43	190	MDS15 683K50B53P3 TUBE
0.082	16.5	6.05	11.0	15.0	6.6	3		43	160	MDS15 823K50B53P3 TUBE
0.10	16.5	6.05	11.0	15.0	6.6	3		43	130	MDS15 104K50B53P3 TUBE
0.12	16.5	6.05	11.0	15.0	6.6	3		43	110	MDS15 124K50B53P3 TUBE
0.15	16.5	6.05	11.0	15.0	6.6	3		43	85	MDS15 154K50B53P3 TUBE
0.18	16.5	6.05	11.0	15.0	6.6	3		43	70	MDS15 184K50B53P3 TUBE
0.22	16.5	6.05	11.0	15.0	6.6	3		43	58	MDS15 224K50B53P3 TUBE
0.27	16.5	6.05	11.0	15.0	6.6	3		43	47	MDS15 274K50B53P3 TUBE
0.33	16.5	6.05	11.0	15.0	6.6	3		43	39	MDS15 334K50B53P3 TUBE
0.39	16.5	6.05	11.0	15.0	6.6	3		43	39	MDS15 394K50B53P3 TUBE
0.47	16.5	6.05	11.0	15.0	6.6	3		43	30	MDS15 474K50B53P3 TUBE
0.56	16.5	6.05	11.0	15.0	6.6	3		43	26	MDS15 564K50B53P3 TUBE
0.68	16.5	6.05	11.0	15.0	6.6	3		43	21	MDS15 684K50B53P3 TUBE
0.82	16.5	6.05	11.0	15.0	6.6	3		43	18	MDS15 824K50B53P3 TUBE
1.0	16.5	6.05	11.0	15.0	6.6	3		43	15	MDS15 105K50B53P3 TUBE
1.2	16.5	6.05	11.0	15.0	6.6	3		43	13	MDS15 125K50B53P3 TUBE
1.5	16.5	6.05	11.0	15.0	6.6	3		43	13	MDS15 155K50B53P3 TUBE
1.8	16.5	6.05	11.0	15.0	6.6	3		43	13	MDS15 185K50B53P3 TUBE
2.2	16.5	6.05	11.0	15.0	6.6	3		43	11	MDS15 225K50B53P3 TUBE
2.7	16.5	6.05	11.0	15.0	6.6	3		43	13	MDS15 275K50B53P3 TUBE
3.3	16.5	6.05	11.0	15.0	6.6	3		43	8	MDS15 335K50B53P3 TUBE
3.9	16.5	6.05	11.0	15.0	6.6	3		43	13	MDS15 395K50B53P3 TUBE
4.7	16.5	6.05	11.0	15.0	6.6	3		43	6	MDS15 475K50B53P3 TUBE
5.6	16.5	6.05	11.0	15.0	6.6	3		43	5	MDS15 565K50B53P3 TUBE
6.8	16.5	6.05	11.0	15.0	6.6	3		43	5	MDS15 685K50B53P3 TUBE

## ARTICLE TABLE

Capacitance $\mu\text{F}$	Dimensions in mm					Leads per side (Px and Py)	Quantity per package		ESR 500kHz m $\Omega$	Article code
	B $\pm 0.2$	H $\pm 0.2$	L $\pm 0.2$	p $\pm 0.2$	h1 max		Reel	Tube		
<b>100 VDC/63 VAC</b>										
<b>LEAD SPACING 10 MM</b>										
0.033	12.2	6.05	11.0	10.0	6.6	3	43	390	MDS10 333K100A52P3 TUBE	
0.039	12.2	6.05	11.0	10.0	6.6	3	43	330	MDS10 393K100A52P3 TUBE	
0.047	12.2	6.05	11.0	10.0	6.6	3	43	270	MDS10 473K100A52P3 TUBE	
0.056	12.2	6.05	11.0	10.0	6.6	3	43	230	MDS10 563K100A52P3 TUBE	
0.068	12.2	6.05	11.0	10.0	6.6	3	43	190	MDS10 683K100A52P3 TUBE	
0.082	12.2	6.05	11.0	10.0	6.6	3	43	160	MDS10 823K100A52P3 TUBE	
0.10	12.2	6.05	11.0	10.0	6.6	3	43	130	MDS10 104K100A52P3 TUBE	
0.12	12.2	6.05	11.0	10.0	6.6	3	43	110	MDS10 124K100A52P3 TUBE	
0.15	12.2	6.05	11.0	10.0	6.6	3	43	85	MDS10 154K100A52P3 TUBE	
0.18	12.2	6.05	11.0	10.0	6.6	3	43	70	MDS10 184K100A52P3 TUBE	
0.22	12.2	6.05	11.0	10.0	6.6	3	43	58	MDS10 224K100A52P3 TUBE	
0.27	12.2	6.05	11.0	10.0	6.6	3	43	47	MDS10 274K100A52P3 TUBE	
0.33	12.2	6.05	11.0	10.0	6.6	3	43	39	MDS10 334K100A52P3 TUBE	
0.39	12.2	6.05	11.0	10.0	6.6	3	43	33	MDS10 394K100A52P3 TUBE	
0.47	12.2	6.05	11.0	10.0	6.6	3	43	30	MDS10 474K100A52P3 TUBE	
0.56	12.2	6.05	11.0	10.0	6.6	3	43	26	MDS10 564K100A52P3 TUBE	
0.68	12.2	6.05	11.0	10.0	6.6	3	43	21	MDS10 684K100A52P3 TUBE	
0.82	12.2	6.05	11.0	10.0	6.6	3	43	18	MDS10 824K100A52P3 TUBE	
1.0	12.2	6.05	11.0	10.0	6.6	3	43	15	MDS10 105K100A52P3 TUBE	
1.2	12.2	6.05	11.0	10.0	6.6	3	43	14	MDS10 125K100A52P3 TUBE	
1.5	12.2	6.05	11.0	10.0	6.6	3	43	13	MDS10 155K100A52P3 TUBE	
1.8	12.2	6.05	11.0	10.0	6.6	3	43	12	MDS10 185K100A52P3 TUBE	
2.2	12.2	6.05	11.0	10.0	6.6	3	43	11	MDS10 225K100A52P3 TUBE	
2.7	12.2	6.05	11.0	10.0	6.6	3	43	10	MDS10 275K100A52P3 TUBE *	
3.3	12.2	6.05	11.0	10.0	6.6	3	43	8	MDS10 335K100A52P3 TUBE *	
3.9	12.2	6.05	11.0	10.0	6.6	3	43	7	MDS10 395K100A52P3 TUBE *	
4.7	12.2	6.05	13.5	10.0	6.6	3, 4	35	6	MDS10 475K100A54PX TUBE *	
5.6	12.2	6.05	16.5	10.0	6.6	3, 4, 5	28	5	MDS10 565K100A55PZ TUBE *	
<b>LEAD SPACING 15 MM</b>										
0.033	16.5	6.05	11.0	15.0	6.6	3	43	390	MDS15 333K100B53P3 TUBE	
0.039	16.5	6.05	11.0	15.0	6.6	3	43	330	MDS15 393K100B53P3 TUBE	
0.047	16.5	6.05	11.0	15.0	6.6	3	43	270	MDS15 473K100B53P3 TUBE	
0.056	16.5	6.05	11.0	15.0	6.6	3	43	230	MDS15 563K100B53P3 TUBE	
0.068	16.5	6.05	11.0	15.0	6.6	3	43	190	MDS15 683K100B53P3 TUBE	
0.082	16.5	6.05	11.0	15.0	6.6	3	43	160	MDS15 823K100B53P3 TUBE	
0.10	16.5	6.05	11.0	15.0	6.6	3	43	130	MDS15 104K100B53P3 TUBE	
0.12	16.5	6.05	11.0	15.0	6.6	3	43	110	MDS15 124K100B53P3 TUBE	
0.15	16.5	6.05	11.0	15.0	6.6	3	43	85	MDS15 154K100B53P3 TUBE	
0.18	16.5	6.05	11.0	15.0	6.6	3	43	70	MDS15 184K100B53P3 TUBE	
0.22	16.5	6.05	11.0	15.0	6.6	3	43	58	MDS15 224K100B53P3 TUBE	
0.27	16.5	6.05	11.0	15.0	6.6	3	43	47	MDS15 274K100B53P3 TUBE	
0.33	16.5	6.05	11.0	15.0	6.6	3	43	39	MDS15 334K100B53P3 TUBE	
0.39	16.5	6.05	11.0	15.0	6.6	3	43	39	MDS15 394K100B53P3 TUBE	
0.47	16.5	6.05	11.0	15.0	6.6	3	43	30	MDS15 474K100B53P3 TUBE	
0.56	16.5	6.05	11.0	15.0	6.6	3	43	26	MDS15 564K100B53P3 TUBE	
0.68	16.5	6.05	11.0	15.0	6.6	3	43	21	MDS15 684K100B53P3 TUBE	
0.82	16.5	6.05	11.0	15.0	6.6	3	43	18	MDS15 824K100B53P3 TUBE	
1.0	16.5	6.05	11.0	15.0	6.6	3	43	15	MDS15 105K100B53P3 TUBE	
1.2	16.5	6.05	11.0	15.0	6.6	3	43	15	MDS15 125K100B53P3 TUBE	
1.5	16.5	6.05	11.0	15.0	6.6	3	43	13	MDS15 155K100B53P3 TUBE	
1.8	16.5	6.05	11.0	15.0	6.6	3	43	13	MDS15 185K100B53P3 TUBE	
2.2	16.5	6.05	11.0	15.0	6.6	3	43	11	MDS15 225K100B53P3 TUBE	
2.7	16.5	6.05	11.0	15.0	6.6	3	43	11	MDS15 275K100B53P3 TUBE	
3.3	16.5	6.05	11.0	15.0	6.6	3	43	8	MDS15 335K100B53P3 TUBE	
3.9	16.5	6.05	11.0	15.0	6.6	3	43	8	MDS15 395K100B53P3 TUBE *	
4.7	16.5	6.05	11.0	15.0	6.6	3	43	6	MDS15 475K100B53P3 TUBE *	
5.6	16.5	6.05	12.2	15.0	6.6	3, 4	39	5	MDS15 565K100B55PX TUBE *	

\* 100 VDC/35 VAC

## ARTICLE TABLE

Capacitance $\mu\text{F}$	Dimensions in mm					Leads per side (Px and Py)	Quantity per package		ESR 500kHz m $\Omega$	Article code
	B $\pm 0.2$	H $\pm 0.2$	L $\pm 0.2$	p $\pm 0.2$	h max		Reel	Tube		
<b>250 VDC/160 VAC</b>										
<b>LEAD SPACING 10 MM</b>										
0.033	12.2	6.05	11.0	10.0	6.6	3		43	390	MDS10 333K250A52P3 TUBE
0.039	12.2	6.05	11.0	10.0	6.6	3		43	330	MDS10 393K250A52P3 TUBE
0.047	12.2	6.05	11.0	10.0	6.6	3		43	270	MDS10 473K250A52P3 TUBE
0.056	12.2	6.05	11.0	10.0	6.6	3		43	230	MDS10 563K250A52P3 TUBE
0.068	12.2	6.05	11.0	10.0	6.6	3		43	190	MDS10 683K250A52P3 TUBE
0.082	12.2	6.05	11.0	10.0	6.6	3		43	160	MDS10 823K250A52P3 TUBE
0.10	12.2	6.05	11.0	10.0	6.6	3		43	130	MDS10 104K250A52P3 TUBE
0.12	12.2	6.05	11.0	10.0	6.6	3		43	110	MDS10 124K250A52P3 TUBE
0.15	12.2	6.05	11.0	10.0	6.6	3		43	85	MDS10 154K250A52P3 TUBE
0.18	12.2	6.05	11.0	10.0	6.6	3		43	70	MDS10 184K250A52P3 TUBE
0.22	12.2	6.05	11.0	10.0	6.6	3		43	58	MDS10 224K250A52P3 TUBE
0.27	12.2	6.05	11.0	10.0	6.6	3		43	47	MDS10 274K250A52P3 TUBE
0.33	12.2	6.05	11.0	10.0	6.6	3		43	39	MDS10 334K250A52P3 TUBE
0.39	12.2	6.05	11.0	10.0	6.6	3		43	33	MDS10 394K250A52P3 TUBE
0.47	12.2	6.05	11.0	10.0	6.6	3		43	30	MDS10 474K250A52P3 TUBE
0.56	12.2	6.05	13.5	10.0	6.6	3, 4		35	26	MDS10 564K250A54PX TUBE
0.68	12.2	6.05	16.5	10.0	6.6	3, 4, 5		28	21	MDS10 684K250A55PZ TUBE
<b>LEAD SPACING 15 MM</b>										
0.033	16.5	6.05	11.0	15.0	6.6	3		43	390	MDS15 333K250B53P3 TUBE
0.039	16.5	6.05	11.0	15.0	6.6	3		43	330	MDS15 393K250B53P3 TUBE
0.047	16.5	6.05	11.0	15.0	6.6	3		43	270	MDS15 473K250B53P3 TUBE
0.056	16.5	6.05	11.0	15.0	6.6	3		43	230	MDS15 563K250B53P3 TUBE
0.068	16.5	6.05	11.0	15.0	6.6	3		43	190	MDS15 683K250B53P3 TUBE
0.082	16.5	6.05	11.0	15.0	6.6	3		43	160	MDS15 823K250B53P3 TUBE
0.10	16.5	6.05	11.0	15.0	6.6	3		43	130	MDS15 104K250B53P3 TUBE
0.12	16.5	6.05	11.0	15.0	6.6	3		43	110	MDS15 124K250B53P3 TUBE
0.15	16.5	6.05	11.0	15.0	6.6	3		43	85	MDS15 154K250B53P3 TUBE
0.18	16.5	6.05	11.0	15.0	6.6	3		43	70	MDS15 184K250B53P3 TUBE
0.22	16.5	6.05	11.0	15.0	6.6	3		43	58	MDS15 224K250B53P3 TUBE
0.27	16.5	6.05	11.0	15.0	6.6	3		43	47	MDS15 274K250B53P3 TUBE
0.33	16.5	6.05	11.0	15.0	6.6	3		43	39	MDS15 334K250B53P3 TUBE
0.39	16.5	6.05	11.0	15.0	6.6	3		43	39	MDS15 394K250B53P3 TUBE
0.47	16.5	6.05	11.0	15.0	6.6	3		43	30	MDS15 474K250B53P3 TUBE
0.56	16.5	6.05	11.0	15.0	6.6	3		43	26	MDS15 564K250B53P3 TUBE
0.68	16.5	6.05	11.0	15.0	6.6	3		43	21	MDS15 684K250B53P3 TUBE
<b>400 VDC/200 VAC</b>										
<b>LEAD SPACING 10 MM</b>										
0.033	12.2	6.05	11.0	10.0	6.6	3		43	390	MDS10 333K400A52P3 TUBE
0.039	12.2	6.05	11.0	10.0	6.6	3		43	330	MDS10 393K400A52P3 TUBE
0.047	12.2	6.05	11.0	10.0	6.6	3		43	270	MDS10 473K400A52P3 TUBE
0.056	12.2	6.05	11.0	10.0	6.6	3		43	230	MDS10 563K400A52P3 TUBE
0.068	12.2	6.05	11.0	10.0	6.6	3		43	190	MDS10 683K400A52P3 TUBE
0.082	12.2	6.05	11.0	10.0	6.6	3		43	160	MDS10 823K400A52P3 TUBE
0.10	12.2	6.05	11.0	10.0	6.6	3		43	130	MDS10 104K400A52P3 TUBE
0.12	12.2	6.05	11.0	10.0	6.6	3		43	110	MDS10 124K400A52P3 TUBE
0.15	12.2	6.05	11.0	10.0	6.6	3		43	85	MDS10 154K400A52P3 TUBE
0.18	12.2	6.05	11.0	10.0	6.6	3		43	70	MDS10 184K400A52P3 TUBE

## ARTICLE TABLE

Capacitance $\mu\text{F}$	Dimensions in mm					Leads per side (Px and Py)	Quantity per package		ESR 500kHz m $\Omega$	Article code
	B $\pm 0.2$	H $\pm 0.2$	L $\pm 0.2$	p $\pm 0.2$	h max		Reel	Tube		
<b>400 VDC/200 VAC</b>										
<b>LEAD SPACING 15 MM</b>										
0.033	16.5	6.05	11.0	15.0	6.6	3		43	390	MDS15 333K400B53P3 TUBE
0.039	16.5	6.05	11.0	15.0	6.6	3		43	330	MDS15 393K400B53P3 TUBE
0.047	16.5	6.05	11.0	15.0	6.6	3		43	270	MDS15 473K400B53P3 TUBE
0.056	16.5	6.05	11.0	15.0	6.6	3		43	230	MDS15 563K400B53P3 TUBE
0.068	16.5	6.05	11.0	15.0	6.6	3		43	190	MDS15 683K400B53P3 TUBE
0.082	16.5	6.05	11.0	15.0	6.6	3		43	160	MDS15 823K400B53P3 TUBE
0.10	16.5	6.05	11.0	15.0	6.6	3		43	130	MDS15 104K400B53P3 TUBE
0.12	16.5	6.05	11.0	15.0	6.6	3		43	110	MDS15 124K400B53P3 TUBE
0.15	16.5	6.05	11.0	15.0	6.6	3		43	85	MDS15 154K400B53P3 TUBE
0.18	16.5	6.05	11.0	15.0	6.6	3		43	70	MDS15 184K400B53P3 TUBE
0.22	16.5	6.05	11.0	15.0	6.6	3		43	58	MDS15 224K400B53P3 TUBE
0.27	16.5	6.05	11.0	15.0	6.6	3		43	47	MDS15 274K400B53P3 TUBE
0.33	16.5	6.05	12.2	15.0	6.6	3, 4		39	39	MDS15 334K400B55Px TUBE

**630 VDC/220 VAC****LEAD SPACING 10 MM**

0.033	12.2	6.05	11.0	10.0	6.6	3		43	390	MDS10 333K630A52P3 TUBE
0.039	12.2	6.05	11.0	10.0	6.6	3		43	330	MDS10 393K630A52P3 TUBE
0.047	12.2	6.05	11.0	10.0	6.6	3		43	270	MDS10 473K630A52P3 TUBE
0.056	12.2	6.05	11.0	10.0	6.6	3		43	230	MDS10 563K630A52P3 TUBE
0.068	12.2	6.05	13.5	10.0	6.6	3, 4		35	190	MDS10 683K630A54Px TUBE

**LEAD SPACING 15 MM**

0.033	16.5	6.05	11.0	15.0	6.6	3		43	390	MDS15 333K630B53P3 TUBE
0.039	16.5	6.05	11.0	15.0	6.6	3		43	330	MDS15 393K630B53P3 TUBE
0.047	16.5	6.05	11.0	15.0	6.6	3		43	270	MDS15 473K630B53P3 TUBE
0.056	16.5	6.05	11.0	15.0	6.6	3		43	230	MDS15 563K630B53P3 TUBE
0.068	16.5	6.05	11.0	15.0	6.6	3		43	190	MDS15 683K630B53P3 TUBE
0.082	16.5	6.05	11.0	15.0	6.6	3		43	160	MDS15 823K630B53P3 TUBE
0.10	16.5	6.05	11.0	15.0	6.6	3		43	130	MDS15 104K630B53P3 TUBE

x = Number of leads per side, 3 or 4

z = Number of leads per side, 3, 4 or 5

## ORDERING INFORMATION

See article table and pages 18 to 23 for options and article code construction.

## MARKING

- EVOX
- Rated capacitance according to IEC 60062
- Capacitance tolerance code
- Rated voltage
- Capacitor family code MDS