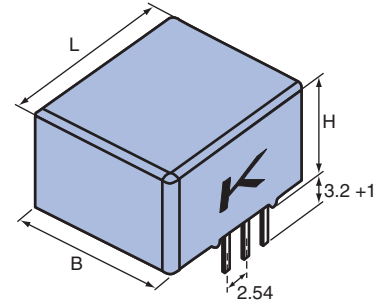
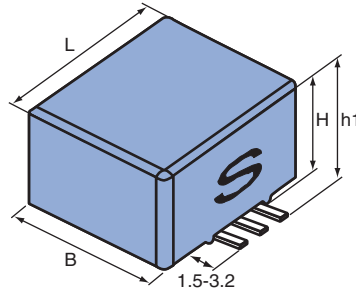
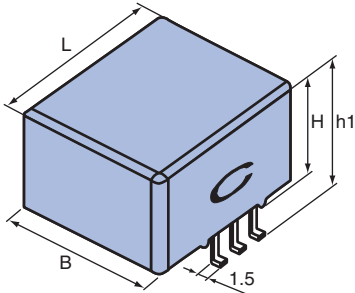
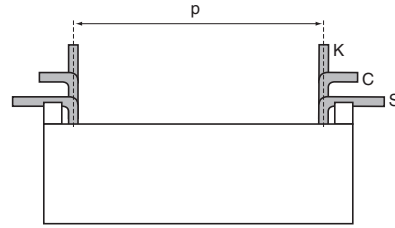


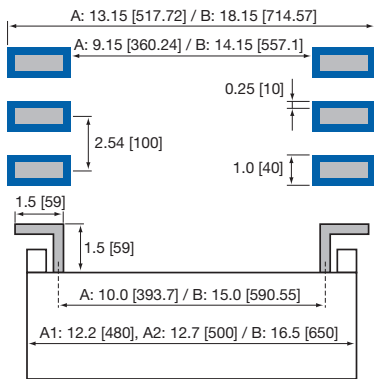
**DESIGN OF DIL CAPACITORS**

The terminals of the Evox Rifa DIL capacitors have three different kinds of designs. The C type (MDC) and S type (MDS) are for surface mounting and the K type (MDK) is for through-hole assembly. The difference in the terminal design is illustrated in the picture to the right.



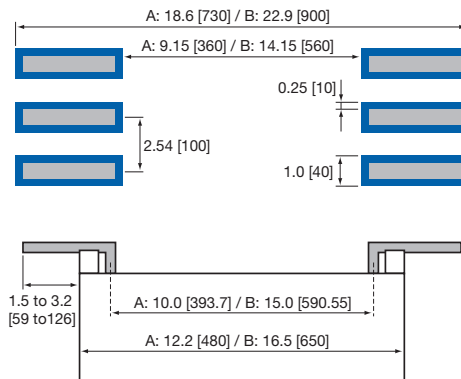
**SOLDERING OF DIL CAPACITORS**

The Evox Rifa DIL capacitors can be soldered on printed boards either by Reflow soldering (MDC and MDS) or Wave soldering (MDK). The recommended soldering land dimensions in mm [mils] are:



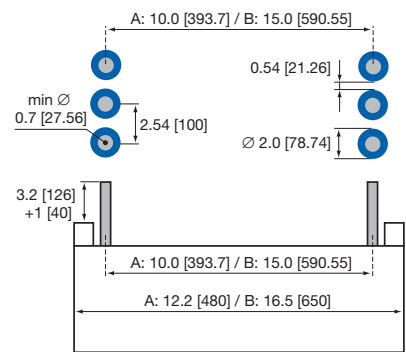
Case:  
 A: A52, A53, A54  
 A55, A57, A58  
 B: B53, B55

**Type C (MDC)**



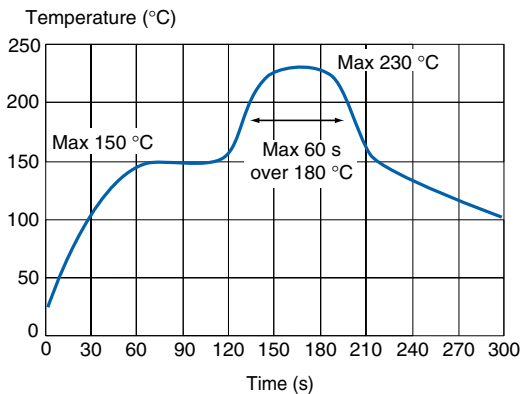
Case:  
 A: A52, A54, A55  
 B: B53, B55

**Type S (MDS)**

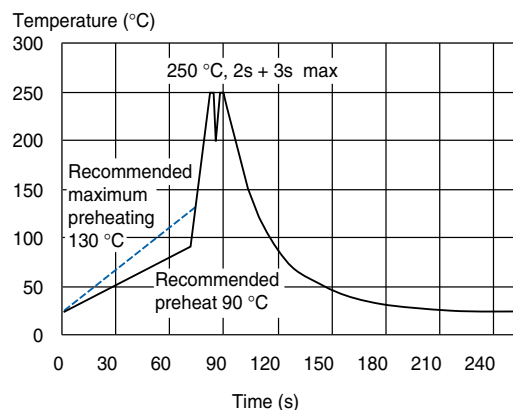


Case:  
 A: A52, A53, A54  
 A55, A57, A58  
 B: B53, B55

**Type K (MDK)**



**Recommended reflow soldering profile for MDC and MDS**

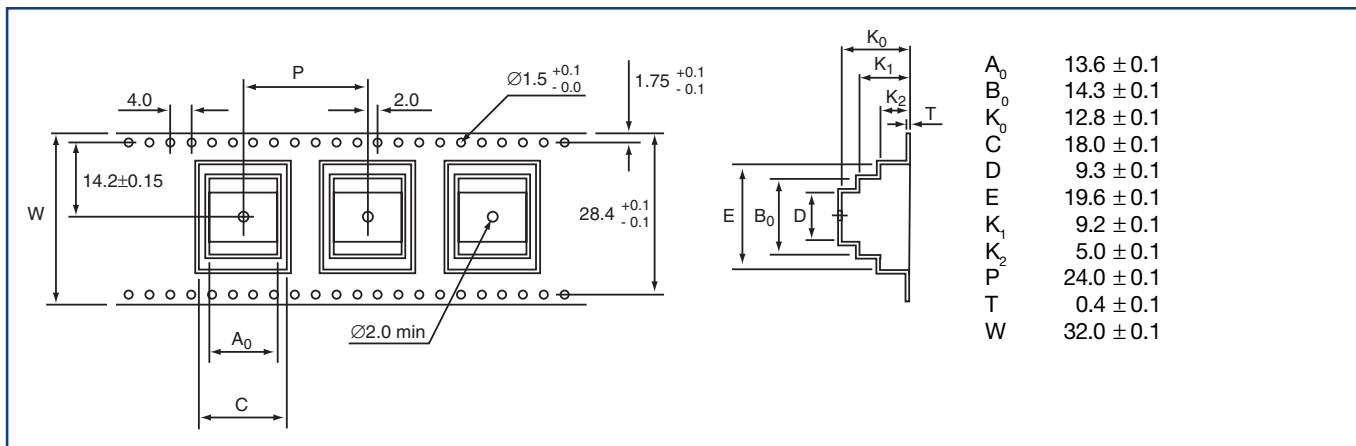


**Recommended wave soldering profile for MDK, total time in solder wave < 5s.**

TAPE PACKAGING OF DIL CAPACITORS

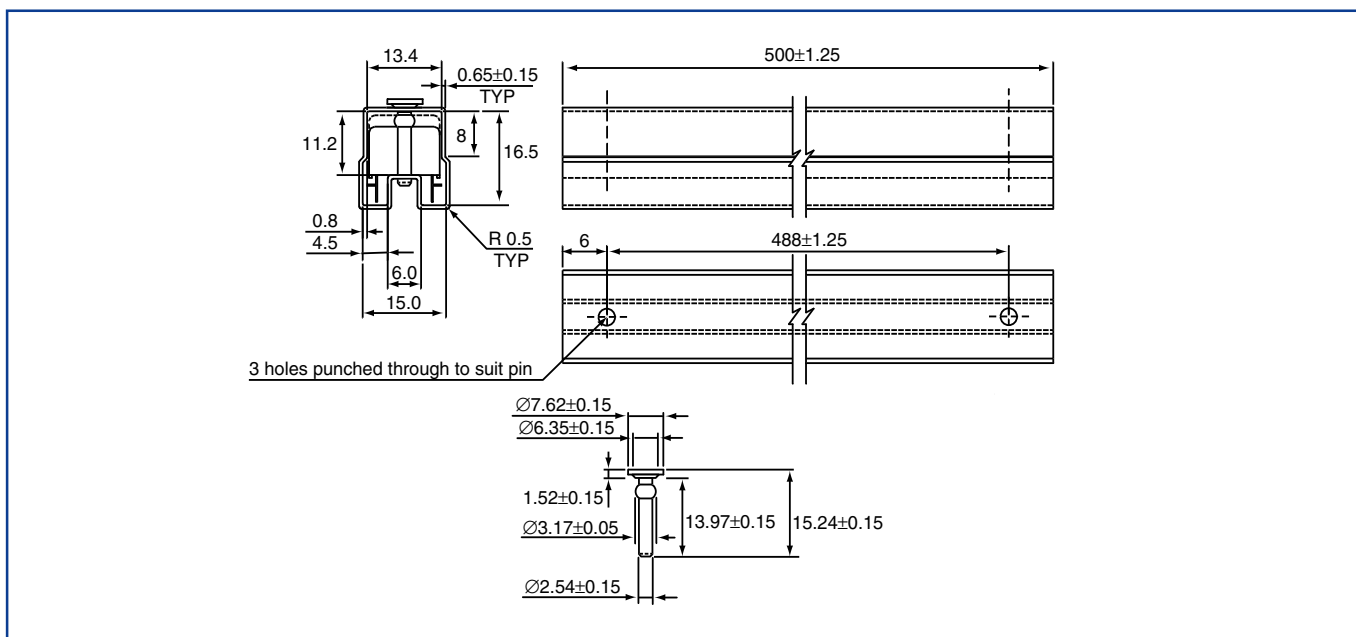
Taped according to IEC 60286-3.

Ordering code: TR32



TUBE PACKAGING OF DIL CAPACITORS

Ordering code: TUBE



MARKING OF DIL CAPACITORS

The capacitor types are as follows:

MDC	PET film	SMD
MDS	PET film	SMD
MDK	PET film	Through-hole

The nominal capacitance value is expressed in nF, if C < 1000 nF and in μF, if C ≥ 1000 nF

Examples: 470 nF = 470 nF      1000 nF = 1.0 μF

The capacitance tolerance is expressed with letter codes:

M	± 20 %
K	± 10 %
J	± 5 %

The rated voltage is expressed in V in DC.

