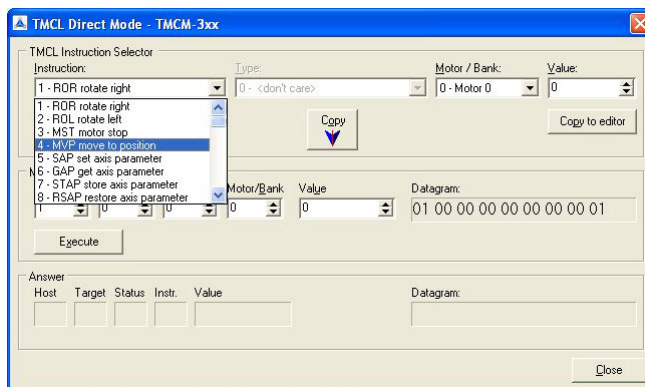


INFO

The TMCL-IDE is an integrated development environment for developing stand-alone TMCL applications and for configuring TCMC modules. The built-in editor with TMCL syntax highlighting allows comfortable editing of TMCL programs. TMCL programs can be assembled, debugged and downloaded into the module using all possible interfaces (RS232, RS485, USB, CAN or IIC). From version 1.70 the TMCL-IDE has an integrated true inSystem debugging tool. It is also possible to read back TMCL programs from a module for analyzing and modifying them. These features make it easy to develop and test even larger TMCL applications. The TMCL-IDE also contains other powerful tools that make it possible to easily find the best parameters for StallGuard™ and to calculate velocity and acceleration parameters.

The TMCL-IDE comes free of charge with all Trinamic modules and can be downloaded from the website.



TMCL-IDE

PC Tools: Integrated Development Environment for TMCL (Trinamic Motion Control Language)

MAIN CHARACTERISTICS

- powerful TMCL editor with syntax highlighting
- TMCL assembler and disassembler
- "Direct Mode" dialogue for online execution of TMCL commands
- "Configure Module" dialogue for setting all important parameters of a module
- StallGuard™ Adjusting Tool for trying StallGuard™ parameters on-line
- StallGuard™ Profiler for finding the best StallGuard™ parameters easily
- parameter calculation tool that allows to calculate velocity and acceleration parameters easily
- tool for updating the firmware of a TCMC module
- integrated true inSystem debugging tool
- possible interfaces:
 - RS232, RS485 (via RS232-RS485 converter, USB to RS485 converter or USB2X), CAN (via CANnes card or USB2X), IIC (via USB2X), USB (for TCMC-610 or TCMC-612)
- works with Windows 98, ME, NT4, 2000 and XP
- free download

ORDER CODE	DESCRIPTION
TMCL-IDE	TMCL Integrated Development Environment (free download)

